

SINGLE PORT SHIELDED POE, POE+ AND POE++ RJ45 JACKS with INTEGRATED MAGNETICS

SERIES	MOUNT	FUNCTIONALITY	LED	ORIENTATION
ARJ-139	Thru Hole	1000 Base-T, PoE++	Green, Yellow - Green	90° Angle (Right)
ARJ-199	Thru Hole	10/100 Base-T, PoE+	Green, Orange - Yellow	90° Angle (Right)
ARJ-146	Thru Hole	10/100/1000 Base-T, PoE	No LED	90° Angle (Right)
ARJP11A	Thru Hole	10/100 Base-TX, PoE	Green - Yellow	90° Angle (Right)
ARJP11C	Thru Hole	10/100 Base-T, PoE	Green - Yellow	90° Angle (Right)



SINGLE PORT SHIELDED 10G BASE-T RJ45 JACKS WITH INTEGRATED MAGNETICS

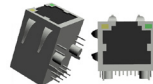
SERIES	MOUNT	FUNCTIONALITY	LED	ORIENTATION
ARJE-1034	SMD	10G Base-T	No LED	90° Angle (Right)
ARJ-128	Thru Hole	10G Base-T	Green - Yellow	90° Angle (Right)

SHIELDED RJ45 JACKS WITH INTEGRATED MAGNETICS & USB COMBO

SERIES	MOUNT	FUNCTIONALITY	LED	ORIENTATION
ARJ-150A	Thru Hole	1000 Base-T w/ 2x USB	Green - Yellow	90° Angle (Right)
ARJ-150C	Thru Hole	1000 Base-T w/ 2x USB	Green, Orange - Yellow	90° Angle (Right)
ARJU31B	Thru Hole	10/100/1000 Base-TX w/ 2x USB	Green - Green, Orange	90° Angle (Right)
ARJ-196	Thru Hole	10/100/1000 Base-T w/ 1x USB, AutoMDIX	Green, Orange - Yellow	90° Angle (Right)
ARJU31A	Thru Hole	10/100 Base-TX w/ 2x USB	Green, Orange - Yellow	90° Angle (Right)
ARJ-150B	Thru Hole	10/100 Base-T w/ 2x USB	Green - Yellow	90° Angle (Right)
ARJE-0029	Thru Hole	10/100 Base-T w/ 2x USB	Green, Orange - Yellow	90° Angle (Right)
ARJ-169	Thru Hole	10/100 Base-T w/ 1x USB, AutoMDIX	Green, Orange - Yellow	90° Angle (Right)
ARJE-0032	Thru Hole	10/100 Base-T w/ 1x USB	Green, Orange - Yellow	90° Angle (Right)

SINGLE PORT SHIELDED RJ45 JACKS WITH INTEGRATED MAGNETICS

SERIES	MOUNT	FUNCTIONALITY	ORIENTATION
ARJM11	PIH Thru Hole	100/1000/2.5G/5G	90° Angle (Right)
ARJE-0040	PIH Thru Hole	10/100/1000 Base-TX	90° Angle (Right)
ARJE-0041	PIH Thru Hole	10/100 Base-T	90° Angle (Right)
ARJ-102S	SMD	10/100/1000 Base-T, SMD	90° Angle (Right)
ARJE-0034	SMD	10/100 Base-T, SMD	90° Angle (Right)
ARJ-101D	Thru Hole	10/100 Base-T	90° Angle (Right)
ARJ11A	Thru Hole	10 Base-T	90° Angle (Right)
ARJ11B	Thru Hole	10/100 Base-T	90° Angle (Right)
ARJ11C	Thru Hole	10/100/1000 Base-T	90° Angle (Right)
ARJ11D	Thru Hole	10/100 Base-T	90° Angle (Right)
ARJ11E	Thru Hole	10/100/1000 Base-TX	90° Angle (Right)
ARJ11F	Thru Hole	10/100/1000 Base-T	90° Angle (Right)
ARJ11G	Thru Hole	10/100 Base-T	Vertical
ARJ-148	Thru Hole	10/100/1000 Base-TX	Vertical
ARJ-205	Thru Hole	10/100/1000 Base-TX	90° Angle (Right)
ARJE-0025	Thru Hole	10/100/1000 Base-T, Low Profile	90° Angle (Right)
ARJE-0026	Thru Hole	10/100 Base-T	90° Angle (Right)
ARJE-0027	Thru Hole	10/100/1000 Base-T	90° Angle (Right)
ARJE-0028	Thru Hole	10/100 Base-T	90° Angle (Right)
ARJE-0030	Thru Hole	10/100/1000 Base-T	90° Angle (Right)
ARJE-0031	Thru Hole	10/100 Base-T	90° Angle (Right)
ARJE-0051	Thru Hole	10/100/1000 Base-T, AutoMDIX	Vertical



Paste-in-Hole



RJ45 Jacks by Abracon

Abracon's RF and Connectivity product line features high speed and Industrial grade RJ45 jacks with performance speeds starting from 10/100/1000 Base-T to 10G Base-T with or without PoE/PoE+/PoE++ support. The integrated magnetic design, available in custom configurable parts, eliminates complex design and testing, reduces time to market, and saves PCB space. Both with and without EMI finger options are available across all RJ45 products.

Shielded vs. Unshielded

Shielded designs offer enhanced EMI and ESD protection and are perfect for harsh industrial environments.

Surface Mount vs. Paste-in-Hole

SMD assembly is preferred over through-hole due to the lower cost, higher density, faster component placement, and availability of high performance IC's. The Abracon RJ45 product line offers 10Gbase-T and 1000Base-T SMD with paste-in-hole assembly option. The pins conform to special clearances that allow for paste-in-hole which accommodates through-hole devices on SMD reflow product lines.

APPLICATIONS



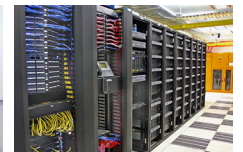
Network interface Cards



ATM



Medical Equipment



Data Center



Machine Vision Systems



Media Converters



Test Equipment



IoT

Discrete LAN Transformers

Discrete LAN transformers from 10/100Base-T to 10GBase-T with support for PoE, PoE+, and PoE++ are also available through Abracon.

For a complete list of companion PHYs see: www.abracon/phyguide.pdf

Product Highlight

ALAN-2402 | 10GBase-T with PoE++ support

The ALAN-2402 transformer module provides optimal signal conditioning, EMI suppression and signal isolation for ethernet connectivity needs.



ALAN-2402