

# Mini Molded Inductors

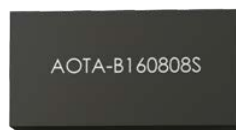


## Power & Magnetics

### Mini Molded Power Inductors

#### Compact High Power Inductors

Abracon's mini-molded inductors bring all the benefits of traditional molded inductors, including superior EMI shielding, high power density, and low core losses, despite their compact size. These inductors effectively mitigate unwanted EMI, handle significant power loads, and exhibit low core losses, ensuring enhanced signal integrity, space efficiency, and improved energy efficiency in electronic circuits.

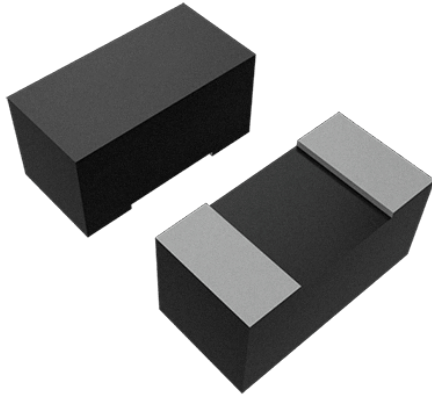


#### FEATURES

- 1.4x1.2mm to 2.5x2.0mm Package Size
- Molded Construction
- Max Height as Low as 0.65mm
- 0.11-10uH Inductance Range
- Up to -40°C~+125°C Operating Temperature Range
- Low DCR
- Metal Alloy Powder
- Saturation Current Up to 14.5A

#### BENEFITS

- Compact Landing Pattern
- Superior EMI Suppression
- High Power Density
- High Switching Frequency Inductors
- Compact Power Support
- Low Thermal and Electrical Losses
- Soft Inductance Saturation



With the expansion of molded inductor technology into these smaller package sizes, Abracon continues to provide solutions that meet the evolving needs of the electronics industry. These compact inductors combine size efficiency with exceptional performance, empowering engineers to design more compact, reliable, and efficient electronic systems.

## PRODUCTS

Series	Inductance)	DCR	Saturation Current	Temperature Rise Current	Operating Temperature	Length (mm)	Width (mm)	Height (mm)
<a href="#">AOTA-B141206S</a>	0.33-0.47 $\mu$ h	28-36 m $\Omega$	3.3-5.7 A	3.2-3.7 A	-40°C ~ +125°C	1.4	1.2	0.65
<a href="#">AOTA-B141208S</a>	0.24-0.47 $\mu$ h	20-28 m $\Omega$	4.2-7.0 A	3.6-5.3 A	-40°C ~ +125°C	1.4	1.2	0.8
<a href="#">AOTA-B160808S</a>	0.47-2.2 $\mu$ h	38-240 m $\Omega$	1.3-3.6 A	1.1-3.3 A	-40°C ~ +125°C	1.6	0.8	0.8
<a href="#">AOTA-B201206S</a>	0.47-2.2 $\mu$ h	32-173 m $\Omega$	1.8-4.8 A	1.8-4.3 A	-40°C ~ +125°C	2.0	1.2	0.65
<a href="#">AOTA-B201208S</a>	0.11-2.2 $\mu$ h	10-120 m $\Omega$	2.1-11 A	2.0-6.5 A	-40°C ~ +125°C	2.0	1.2	0.8
<a href="#">AOTA-B201210S</a>	0.11-2.2 $\mu$ h	8-100 m $\Omega$	2.4-14.5 A	2.2-7.7 A	-40°C ~ +125°C	2.0	1.2	1.0
<a href="#">AOTA-B201608S</a>	0.24-2.2 $\mu$ h	18-134 m $\Omega$	2.6-8.2 A	2.0-6.2 A	-40°C ~ +125°C	2.0	1.6	0.8
<a href="#">AOTA-B201610S</a>	0.24-2.2 $\mu$ h	11-213 m $\Omega$	1.9-7.8 A	1.5-5.6 A	-40°C ~ +125°C	2.0	1.6	1.0
<a href="#">AOTA-B252008S</a>	1-10 $\mu$ h	39-507 m $\Omega$	1.4-4.8 A	1.1-3.8 A	-40°C ~ +125°C	2.5	2.0	0.8
<a href="#">AOTA-B252010S</a>	0.33-10 $\mu$ h	16-420 m $\Omega$	1.7-8.5 A	1.4-5.5 A	-40°C ~ +125°C	2.5	2.0	1.0

## Looking for more information?



[Check Inventory](#)

[View Parametric Search](#)

Visit our website now to learn more about how our compact inductors can benefit your high-power applications: [Abracon's Mini Molded Inductors](#)

Contact your local Abracon representative for additional information

[Contact Us](#)