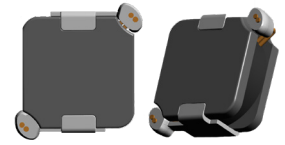


# ASPIAIG-H SERIES

## Compact Shielded SMD Power Inductor For Automotive



ASPIAIG-H6530 7.1 x 6.5 x 3.0mm  
ASPIAIG-H8540 8.8 x 8.5 x 4.0mm

## ASPIAIG-H6530 AND ASPIAIG-H8540

The ASPIAIG-H6530 and ASPIAIG-H8540 are a series of automotive shielded SMD inductors optimized for compact and low profile applications requiring low DC resistance (DCR), high energy density and high saturation current while maintaining high inductance. Using an advanced Fe-base metal material and wire-wound construction these inductors meet high reliability requirements for automotive and industrial operation from -40°C to 125°C ambient temperatures. The ASPIAIG-H6530 is available with a low profile 7.1 x 6.5 x 3.0mm package and ASPIAIG-H8540 in 8.8 x 8.5 x 4.0 mm. Designed to meet the requirements of next generation DC/DC converters and switch-mode power supplies (SMPS), these inductors offer excellent size to power density tradeoffs with inductance ranging from 0.22μH to 33μH. The family offers saturation currents as high as 32A with guaranteed 3.5mΩ DCR at 25°C. Shielded construction reduces EMI. This series is TS-16949 and AEC-Q200 qualified supporting PPAP level 3.

### Features

- Low profile 3mm height for compact applications
- Advanced and high reliability wire-wound construction
- Shielded construction reduces EMI
- Automotive grade power inductor
- TS-16949 qualified production
- PPAP level 3 support
- AEC-Q200 qualified with -40°C to 125°C operation
- Low DCR down to 3.5mΩ improves efficiency
- High saturation current up to 32A
- Compact 7.1 x 6.5mm or 8.8 x 8.5mm options

### Applications

- Internet of Things (Ethernet)
- IP cameras, surveillance, and phone
- Access points
- Industrial computers
- Network interface cards (NIC)
- Industrial process control
- Networking and communications
- Broadcast video
- Storage
- Set top box and video
- Power over Ethernet (PoE)
- Test and Measurement
- Multifunction Printers (MFP)

Part Number	Inductance	DC Resistance	DC Current
	100kHz/1V	Max (25°C)	Typ
Units	μH	mΩ	A
Symbol	L	DCR	Idc
ASPIAIG-H6530-XXX	0.22-22.0	4.0-177.0	20.0-2.8
ASPIAIG-H8540-XXX	0.47-33.0	3.5-178.8	11.3-2.0