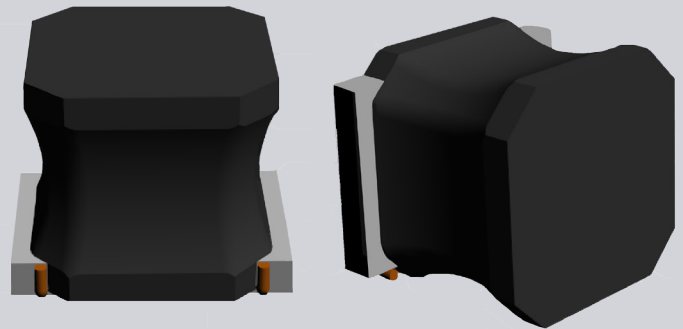


COMPACT SHIELDED SMD POWER INDUCTOR FOR AUTOMOTIVE

APPLICATIONS

- Applications requiring high inductance value
- Automotive body electronics and comfort system
- Automotive infotainment and entertainment
- Automotive navigation
- Transportation
- Lighting, LED ballasts
- Industrial Internet of Things (IIoT)
- Industrial applications
- Solar power
- DC/DC converters and switch mode power supplies



ASPIAIG-S6055
ASPIAIG-S8050

6.0 X 6.0 X 5.5 MM
8.0 X 8.0 X 5.0 MM

PRODUCT DESCRIPTION

The ASPIAIG-S6055 and ASPIAIG-S8050 are a series of shielded SMD power inductors designed for automotive, industrial and other high reliability applications requiring operation from -40 °C to 125 °C ambient temperatures. These inductors feature compact form factors with ASPIAIG-S6055 available with 6.0 x 6.0 x 5.5 mm and ASPIAIG-S8050 available with 8.0 x 8.0 x 5.0 mm dimensions. Designed to meet the requirements of next generation DC/DC converters and switch-mode power supplies (SMPS), these inductors offer excellent size to power density tradeoffs with inductance ranging from 1 μH to 470 μH. The family offers saturation currents as high as 16A with guaranteed 24mΩ DCR at 25 °C. Shielded construction reduces EMI. This series is TS-16949 and AEC-Q200 qualified supporting PPAP level 3.

FEATURES

- High reliability wire-wound construction
- Shielded construction reduces EMI
- Automotive grade power inductor
- TS-16949 qualified production
- PPAP level 3 support
- AEC-Q200 qualified with -40 °C to 125 °C operation
- High inductance up to 470 μH

STANDARD SPECIFICATION OVERVIEW

Part Number	Inductance	DC Resistance	DC Current
	100kHz/1V	Max (25 °C)	Typ
Units	μH	Ω	A
Symbol	L	DCR	I _{dc}
ASPIAIG-S6055-XXX	3.3-330	0.026-1.603	4.60-0.60
ASPIAIG-S8050-XXX	1-470	0.010-1.540	7.20-0.55

Technical Support: Tech-Support@abracon.com
General Inquiries: ABInfo@abracon.com