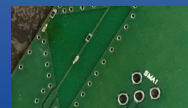


791 ~ 960 MHz – ProAnt Niche Antenna



PRO-EB-597

Request Samples



Check Inventory



25.0 x 16.0 mm

MSL Level = 1

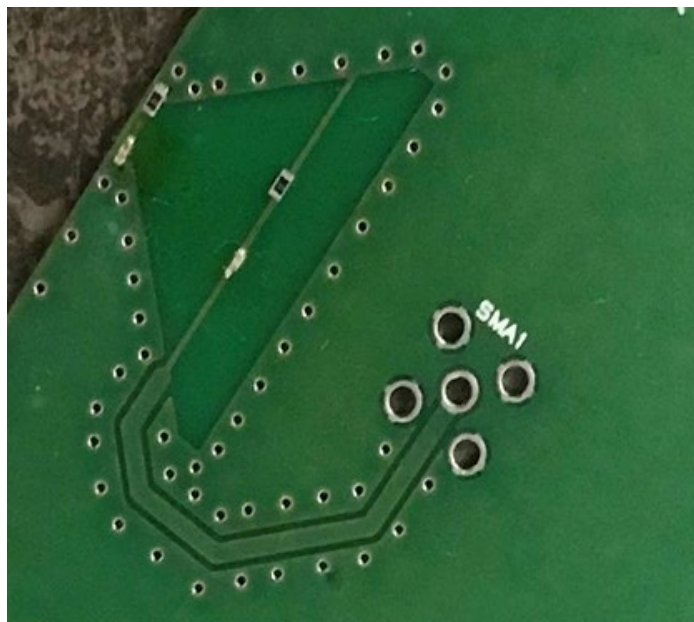
Features

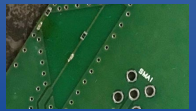
- Very low cost, Patented Technology
- Business Model : License Agreement
- Compact
- Highly efficient ($\eta > 78\%$)
- Low Return Loss (RL < -8.1 dB)
- Integration : Along PCB Edge

Applications

- NB-IoT, Sub-GHz Cellular Applications
- IoT, M2M
- Wearables
- Wireless Remote Control
- Industrial Automation

Product Image





PRO-EB-597

Request Samples



Check Inventory



25.0 x 16.0 mm

MSL Level = 1

Electrical Specification

Parameter	Specification			Unit
	Min	Typ	Max	
Operating Frequency	791		960	MHz
Return Loss			-8.1	dB
Polarization	Linear			
Peak Gain			5.5	dBi
Efficiency	78			%
Impedance		50		Ω

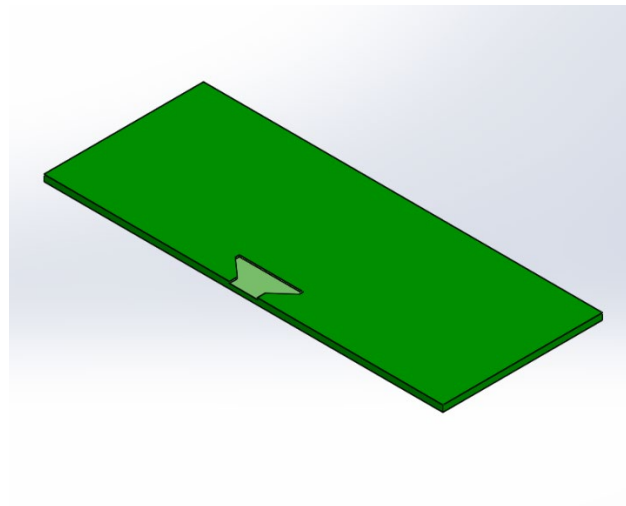
Note: All test measurements were conducted with the antenna on a 120 x 50 mm Evaluation board. Please note that the performance is dependent on the ground plane dimensions, tuning components and application environment.

Mechanical Specification

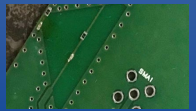
Parameter	Specification
Antenna Dimension	25 x 16 mm
Evaluation board Dimension	120 x 50 mm
Mounting Type	Directly engraved on PCB

Measurement Setup

The antenna measurements were done in free space, with the antenna implemented on a 120 x 50 mm PCB.



791 ~ 960 MHz – ProAnt Niche Antenna



PRO-EB-597

Request Samples



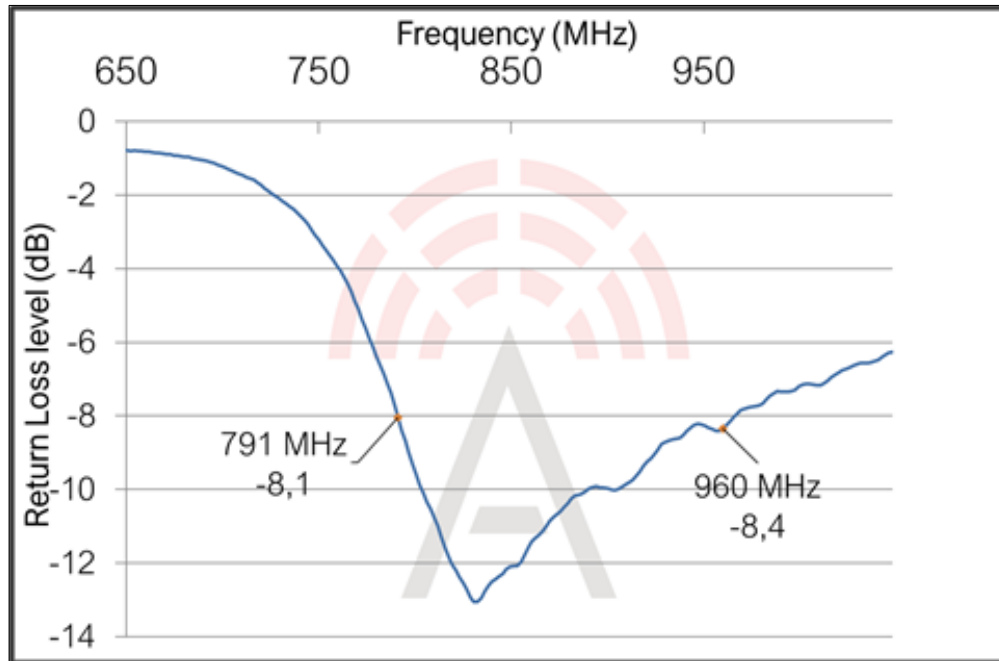
Check Inventory



25.0 x 16.0 mm

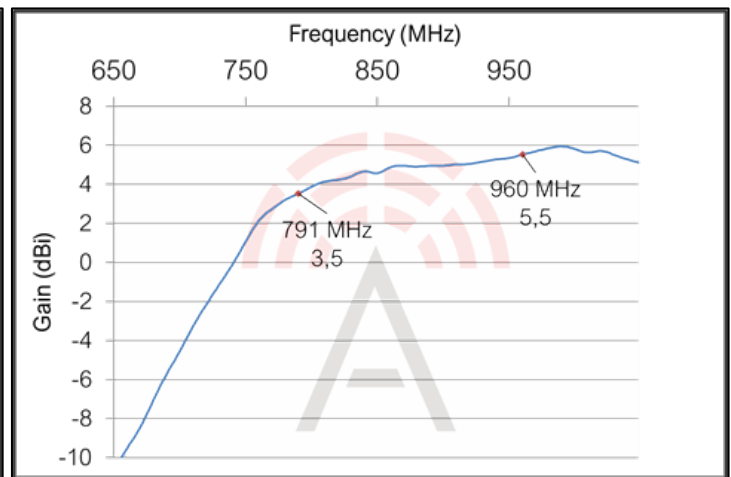
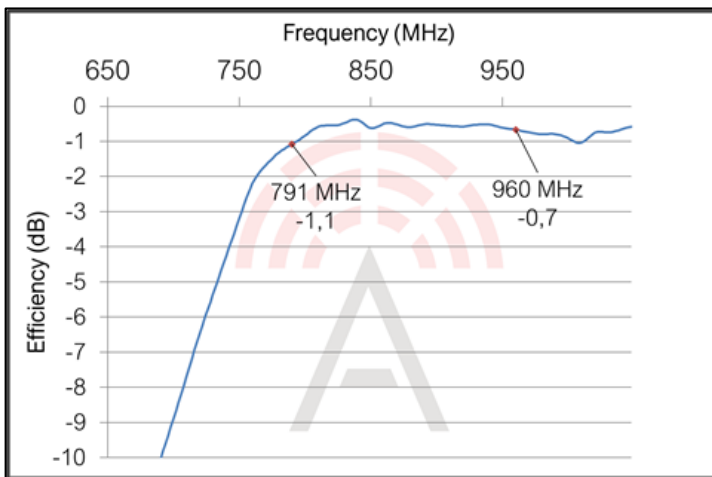
MSL Level = 1

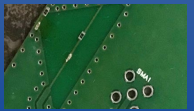
Reflection Characteristics - Return Loss



Total Radiation Efficiency

Maximum Radiation Gain





PRO-EB-597

Request Samples



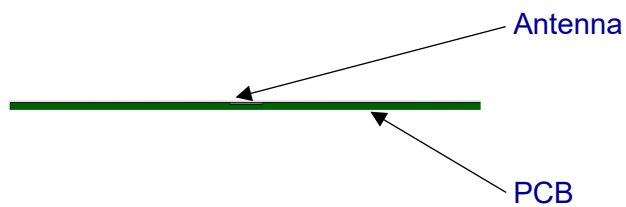
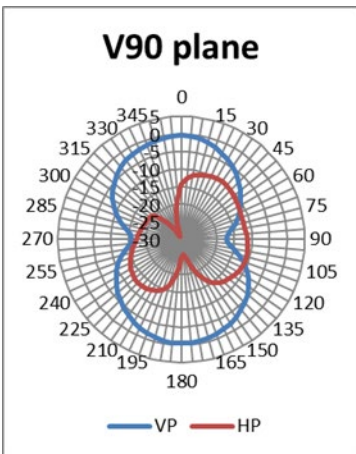
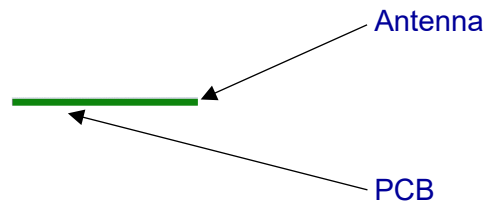
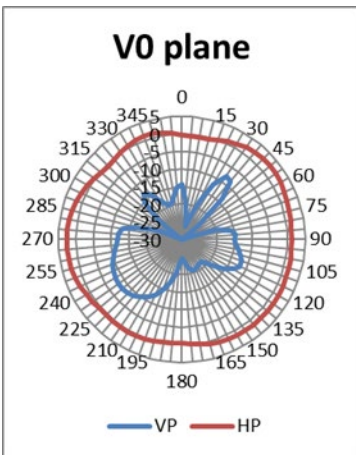
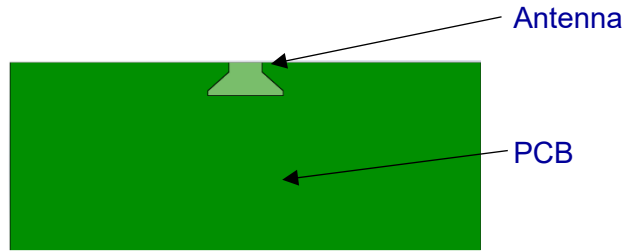
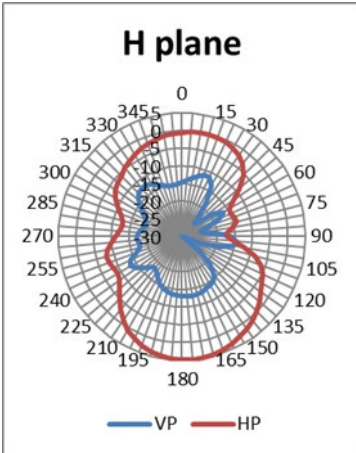
Check Inventory



25.0 x 16.0 mm

MSL Level = 1

Radiation Characteristics - 2D Pattern (876 MHz)



791 ~ 960 MHz – ProAnt Niche Antenna

PRO-EB-597

Licensing Information

License agreement information, terms and conditions, and design advice are provided upon request. Please send all requests to info@proant.se

ATTENTION: Abracon LLC's products are COTS – Commercial-Off-The-Shelf products; suitable for Commercial, Industrial and, where designated, Automotive Applications. Abracon's products are not specifically designed for Military, Aviation, Aerospace, Life-dependent Medical applications or any application requiring high reliability where component failure could result in loss of life and/or property. For applications requiring high reliability and/or presenting an extreme operating environment, written consent and authorization from Abracon LLC is required. Please contact Abracon LLC for more information.



5101 Hidden Creek Ln Spicewood TX 78669
Phone: 512-371-6159 | Fax: 512-351-8858
For terms and conditions of sales, please visit:
www.abracon.com

REVISED: 09-29-21

ABRACON IS
ISO9001-2015
CERTIFIED