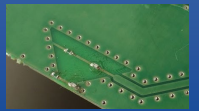


# 868 ~ 915 MHz – ProAnt Niche Antenna



**PRO-EB-596**

Request Samples



Check Inventory



16.0 x 8.0 mm

MSL Level = N/A

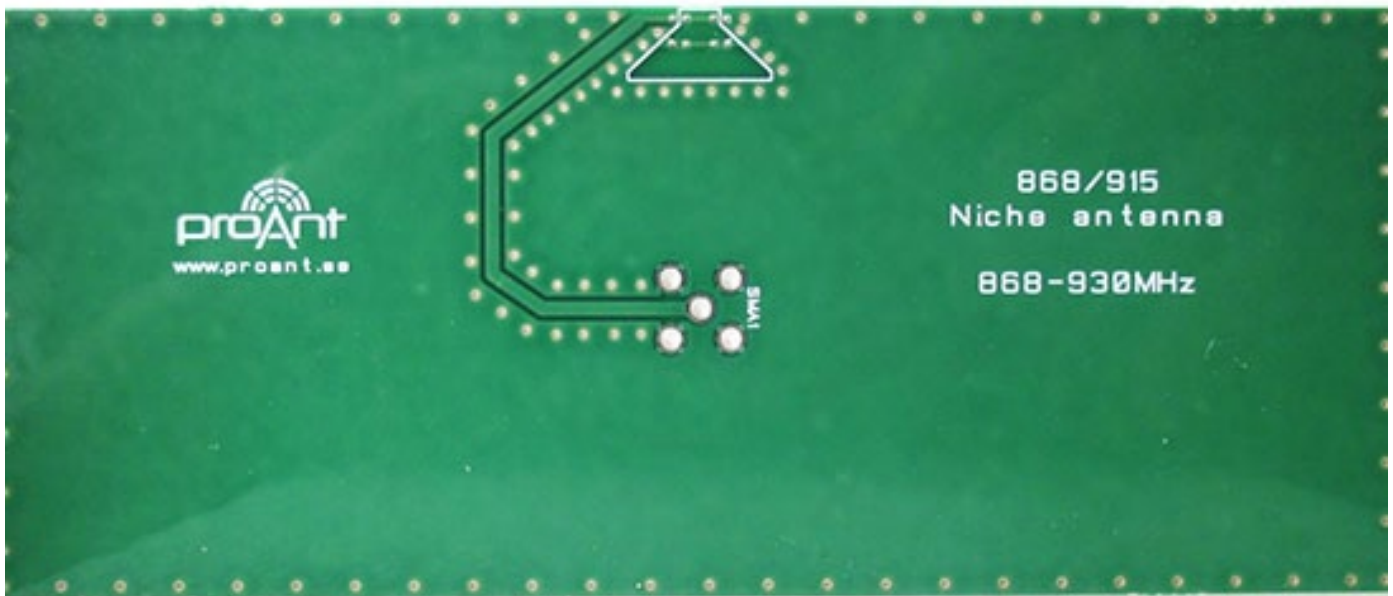
## Features

- Very low cost, Patented Technology
- Business Model: License Agreement
- Ultra-Compact
- Highly efficient ( $\eta \geq 60\%$ )
- Low Return Loss (RL < -6.2 dB)
- Integration: Along PCB Edge

## Applications

- 868 ~ 915 MHz LPWA/LoRA/SigFox/ISM Applications
- IoT, M2M
- Remote Monitoring/ Technology
- Smart metering
- Smart Home
- Wireless Remote Control
- Industrial/Commercial equipment
- Consumer Tracking

## Product Image



5101 Hidden Creek Ln Spicewood TX 78669  
Phone: 512-371-6159 | Fax: 512-351-8858  
For terms and conditions of sales, please visit:  
[www.abracon.com](http://www.abracon.com)

REVISED: 09-29-21

ABRACON IS  
ISO9001-2015  
CERTIFIED



**PRO-EB-596**

Request Samples



Check Inventory



16.0 x 8.0 mm

MSL Level = N/A

## Electrical Specification

Parameter	Specification			Unit
	Min	Typ	Max	
Operating Frequency	868		928	MHz
Return Loss			-6.2	dB
Polarization	Linear			
Peak Gain			3	dBi
Efficiency	60			%
Impedance		50		$\Omega$

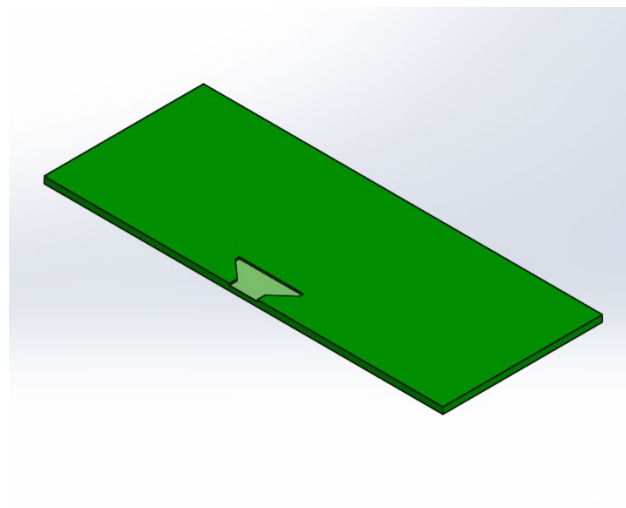
Note: All test measurements were conducted with the antenna on a 50 x 20 mm Evaluation board. Please note that the performance is dependent on the ground plane dimensions, tuning components and application environment.

## Mechanical Specification

Parameter	Specification
Antenna Dimension	16 x 8 mm
Evaluation board Dimension	120 x 50 mm
Mounting Type	Directly engraved on PCB

## Measurement Setup

The antenna measurements were done in free space, with the antenna implemented on a 120 x 50 mm PCB.



# 868 ~ 915 MHz – ProAnt Niche Antenna



**PRO-EB-596**

Request Samples



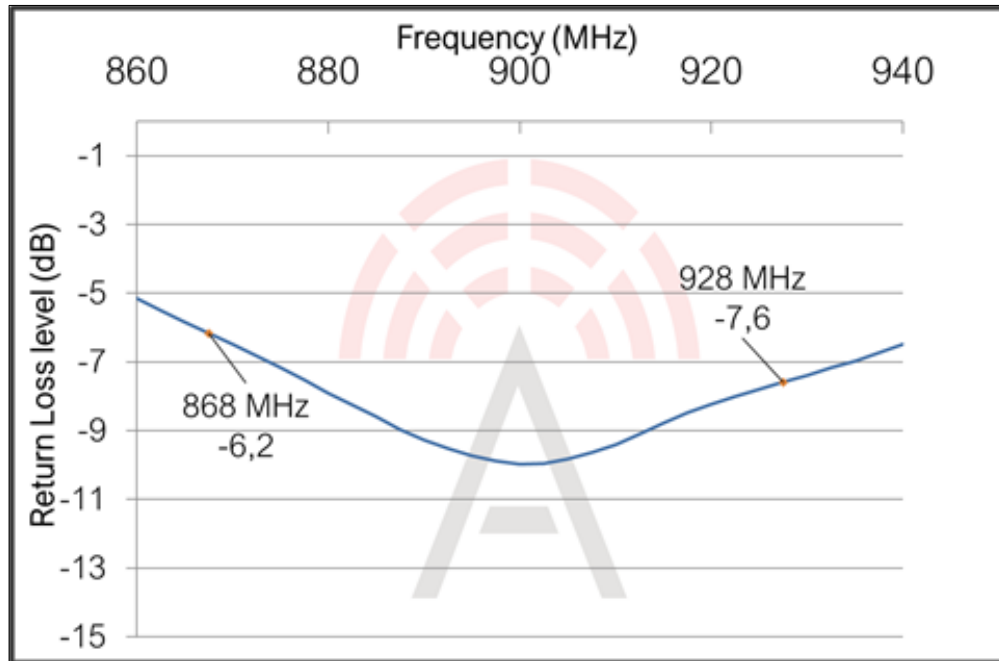
Check Inventory



16.0 x 8.0 mm

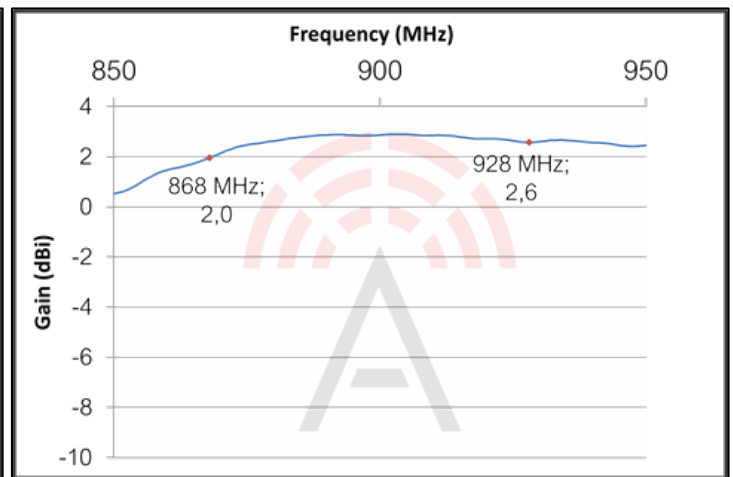
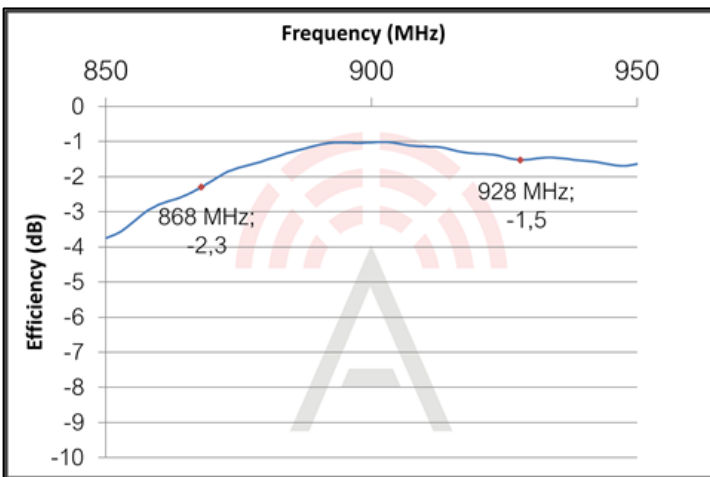
MSL Level = N/A

## Reflection Characteristics - Return Loss



## Total Radiation Efficiency

## Maximum Radiation Gain

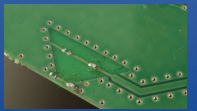


5101 Hidden Creek Ln Spicewood TX 78669  
Phone: 512-371-6159 | Fax: 512-351-8858  
For terms and conditions of sales, please visit:  
[www.abracon.com](http://www.abracon.com)

REVISED: 09-29-21

ABRACON IS  
ISO9001-2015  
CERTIFIED

# 868 ~ 915 MHz – ProAnt Niche Antenna



**PRO-EB-596**

Request Samples



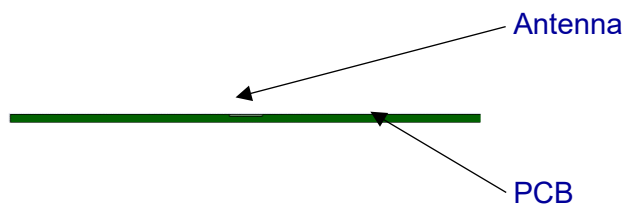
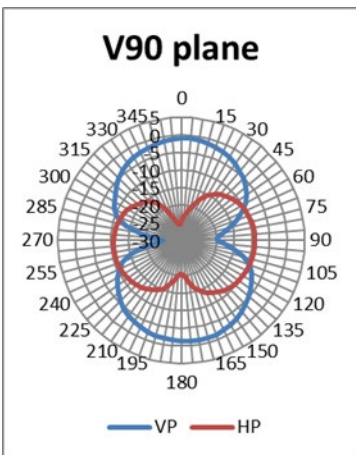
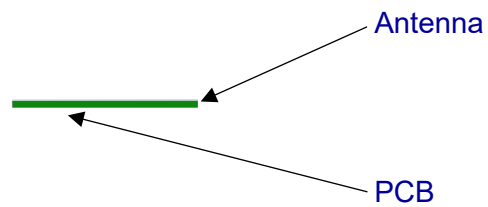
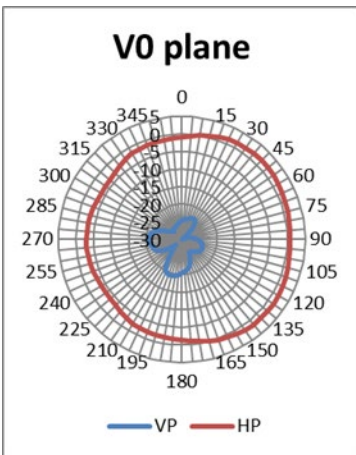
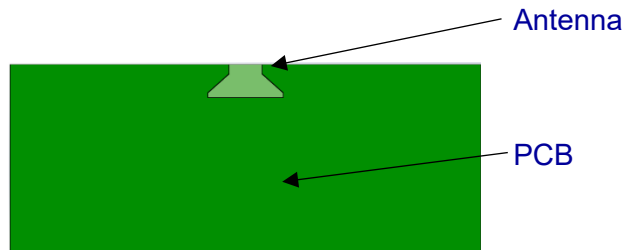
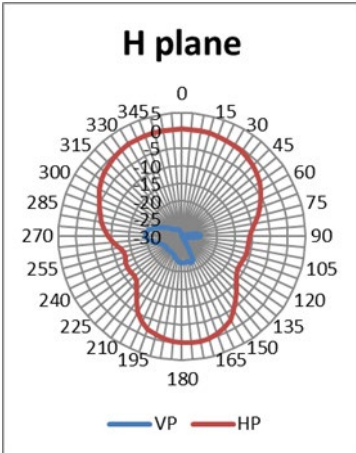
Check Inventory



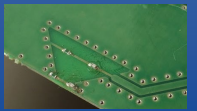
16.0 x 8.0 mm

MSL Level = N/A

## Radiation Characteristics - 2D Pattern (868 MHz)



# 868 ~ 915 MHz – ProAnt Niche Antenna



**PRO-EB-596**

Request Samples



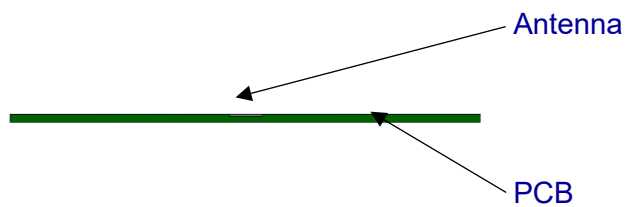
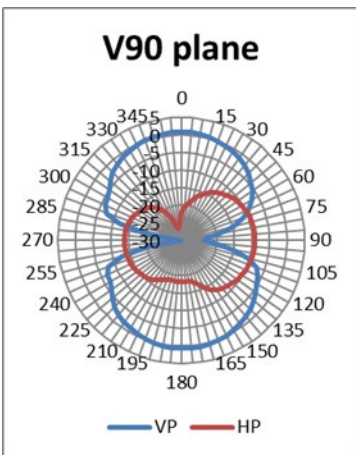
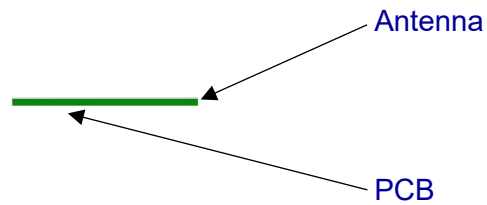
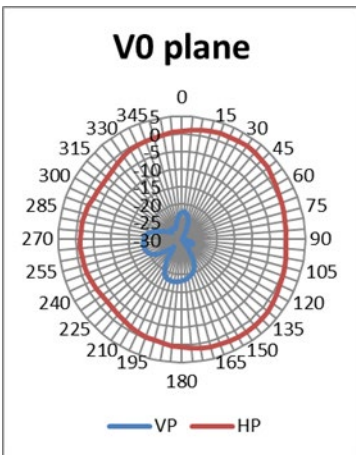
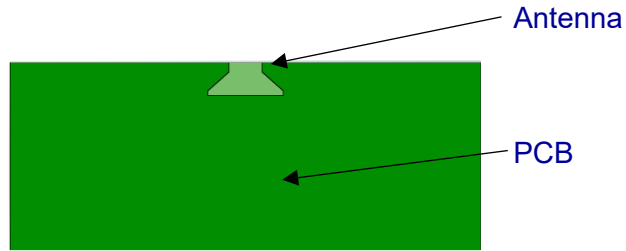
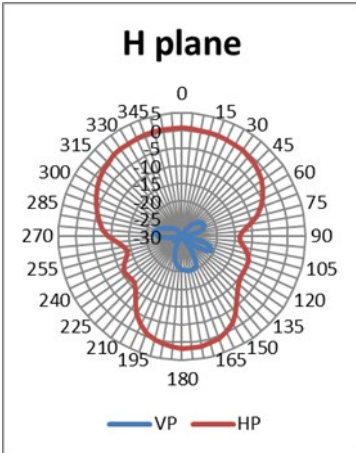
Check Inventory



16.0 x 8.0 mm

MSL Level = N/A

## Radiation Characteristics - 2D Pattern (915 MHz)



# 868 ~ 915 MHz – ProAnt Niche Antenna

PRO-EB-596

## Licensing Information

---

License agreement information, terms and conditions, and design advice are provided upon request. Please send all requests to [info@proant.se](mailto:info@proant.se)

**ATTENTION:** Abracon LLC's products are COTS – Commercial-Off-The-Shelf products; suitable for Commercial, Industrial and, where designated, Automotive Applications. Abracon's products are not specifically designed for Military, Aviation, Aerospace, Life-dependent Medical applications or any application requiring high reliability where component failure could result in loss of life and/or property. For applications requiring high reliability and/or presenting an extreme operating environment, written consent and authorization from Abracon LLC is required. Please contact Abracon LLC for more information.



5101 Hidden Creek Ln Spicewood TX 78669  
Phone: 512-371-6159 | Fax: 512-351-8858  
For terms and conditions of sales, please visit:  
[www.abracon.com](http://www.abracon.com)

**REVISED: 09-29-21**

ABRACON IS  
ISO9001-2015  
CERTIFIED