

AVR-1F090706S

Request Samples



Check Inventory



9.3 x 6.8 x 5.5 mm
RoHS/RoHS II Compliant
 MSL Level = 1

Features

- Shielded construction
- Soft saturation
- High Power Density
- Low DCR, High Efficiency
- Perfect for multi-phased power circuitry

Applications

- Desktop/ Server applications
- High current point-of-load (POL) converters
- Lighting
- Solar inverters and power
- Industrial and robotics
- Medium and high-power switch mode power supplies.

Electrical Specifications

Part Number	Inductance	Tolerance	DC Resistance	Saturation Current (Typ)			Temperature Rise Current
	0.1MHz/1.0V			@25°C	@100°C	@125°C	Min.
Units	nH	%	mΩ ±10%	A			A
Symbol	L		DCR	Isat			Irms
AVR-1F090706S70NL	70	±15%	0.14	100	85	75	65
AVR-1F090706SR10L	100	±15%	0.14	70	59	52	65
AVR-1F090706SR12L	120	±15%	0.14	58	49	43	65
AVR-1F090706SR15L	150	±15%	0.14	46	39	35	65
AVR-1F090706SR18L	180	±15%	0.14	38	33	29	65
AVR-1F090706SR22L	220	±15%	0.14	31	27	23	65

Test Conditions

Isat: DC current at which the inductance drops 30% from its value without current.

Irms: DC current that causes the temperature rise (ΔT , approximate 40 °C) from 20°C ambient

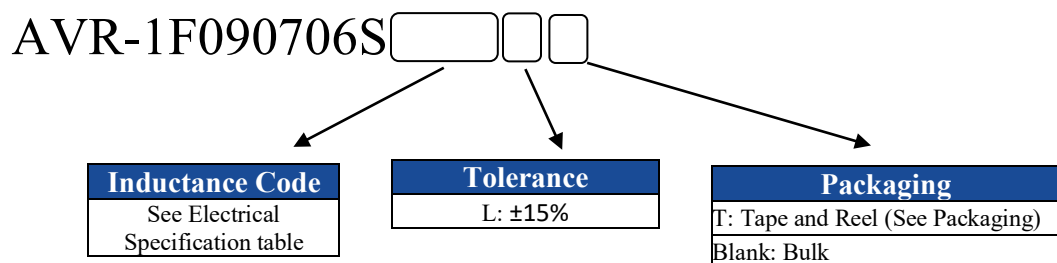
Operating Temperature: -40°C ~ +125°C (including self-temperature rise)

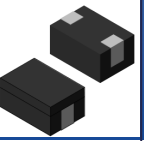
Storage Condition: -40°C ~ +85°C (with packaging) and R.H. <95% max

Operating Voltage: 40V (across inductor)

AVR-1F090706S Series is RoHS Compliant and Pb free

Part Identification





AVR-1F090706S

Request Samples

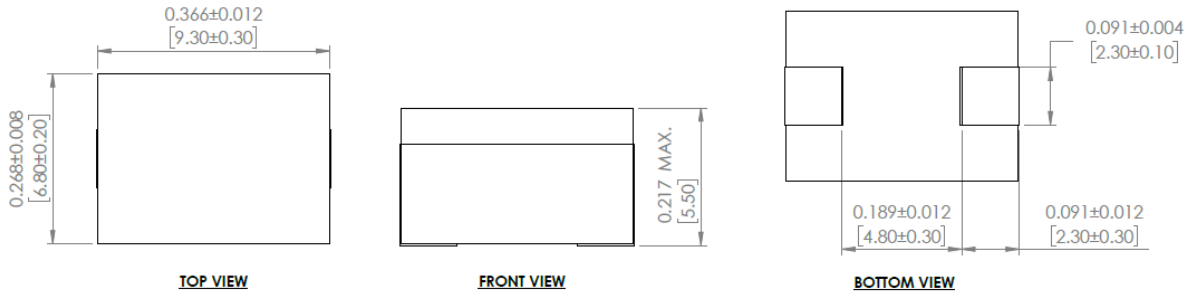


Check Inventory



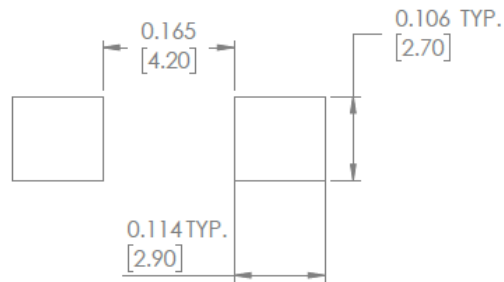
9.3 x 6.8 x 5.5 mm
RoHS/RoHS II Compliant
MSL Level = 1

Mechanical Specifications

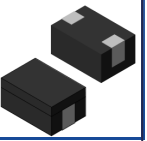


Dimensions: Inches [mm]

Recommended Land Pattern



Dimensions: Inches [mm]



AVR-1F090706S

Request Samples

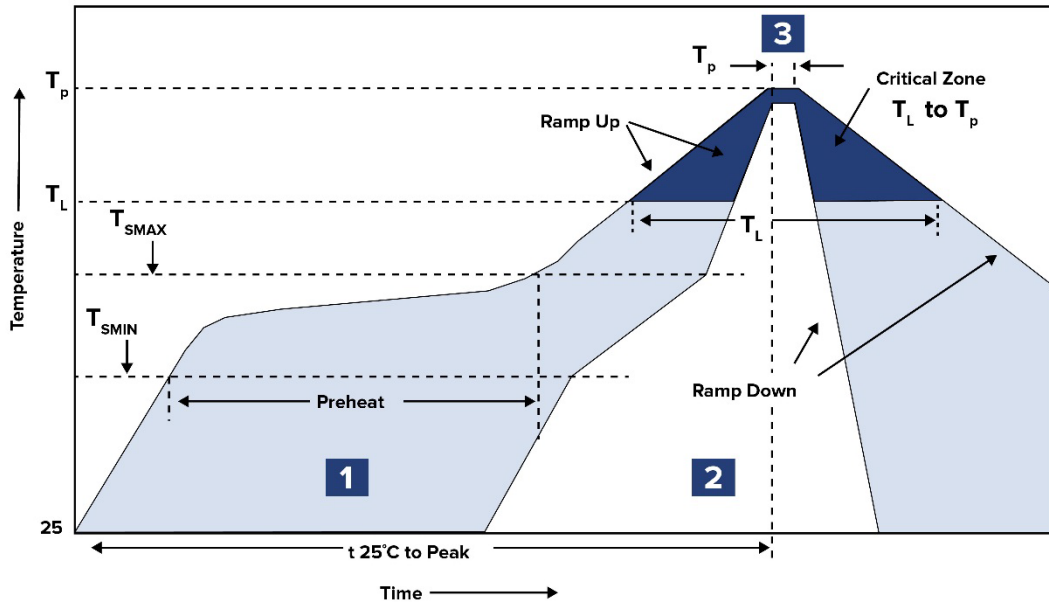


Check Inventory

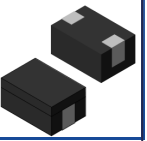


9.3 x 6.8 x 5.5 mm
RoHS/RoHS II Compliant
 MSL Level = 1

Reflow Profile



Zone	Description	Temperature	Times
1	Preheat	$T_{SMIN} \sim T_{SMAX}$ 150°C ~ 200°C	60 ~ 120 sec.
2	Reflow	T_L 217°C	60 ~ 150 sec.
3	Peak heat	T_P 260°C	5 sec. MAX



AVR-1F090706S

Request Samples



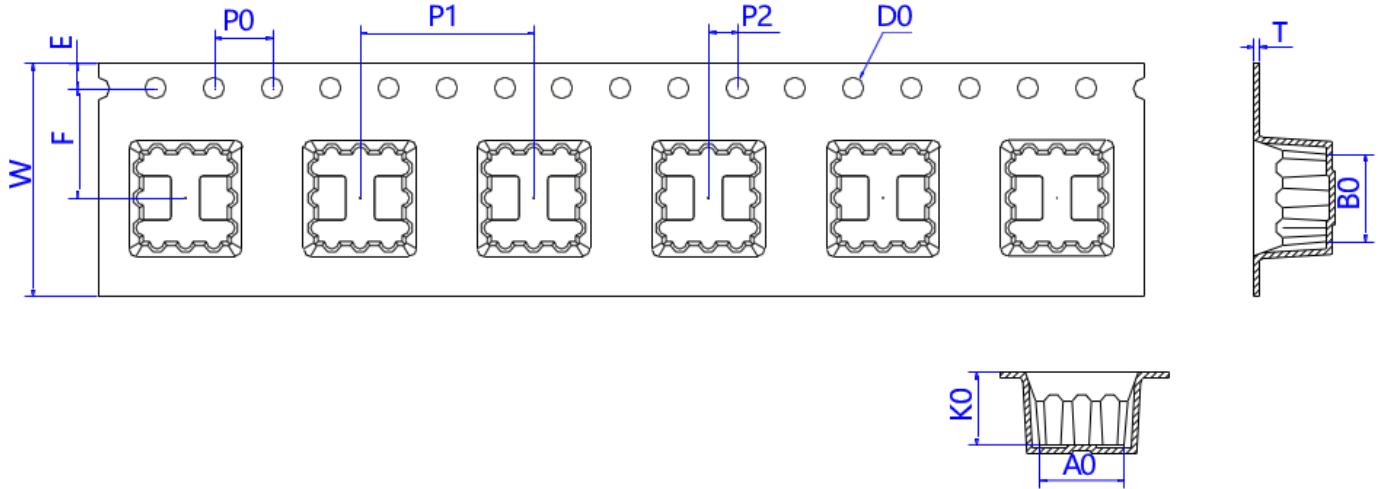
Check Inventory



9.3 x 6.8 x 5.5 mm
RoHS/RoHS II Compliant
 MSL Level = 1

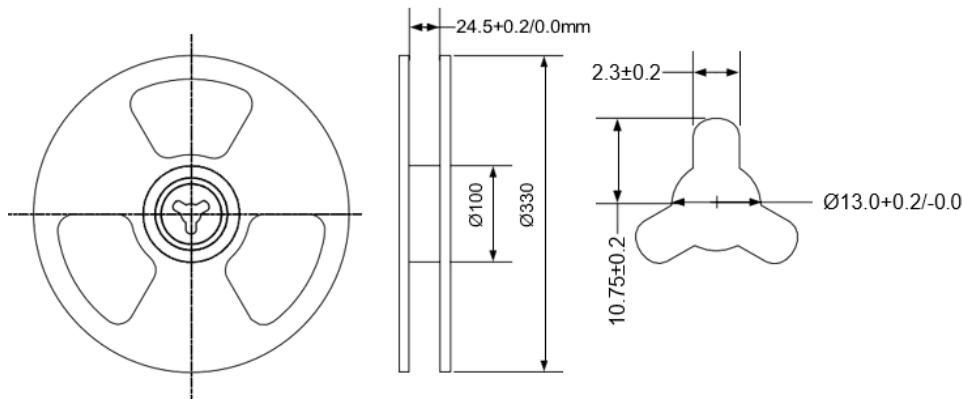
Packaging

Tape & Reel: 700 pcs/reel



Series	W	E	F	P0	P1	P2	D0	A0	B0	T	K0
AVR-1F090706S	24.00 ±0.3	1.75 ±0.10	11.50 ±0.10	4.0 ±0.1	12.0 ±0.1	2.0 ±0.1	1.5 + 0.1/- 0.0	7.20 ±0.10	9.8 ±0.10	0.40 ±0.05	5.70 ±0.10

Dimensions: mm



Dimensions: mm

ATTENTION: Abracon LLC's products are Commercial-Off-The-Shelf (COTS), which are designed, intended and validated for use in commercial, industrial and automotive applications. The customer is responsible for testing and verifying the performance of an Abracon solution to meet their system-level requirements.



5101 Hidden Creek Ln, Spicewood TX 78669
 Phone: 512-371-6159 Fax: 512-351-8858
 For terms and conditions of sales, please visit:
www.abracon.com

REVISION Initial Release :
 12/2024

ABRACON IS
 ISO9001-2015
 CERTIFIED