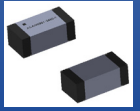


2.45 GHz Ceramic Chip Antenna



ACAG0301-2450-T



3.2 x 1.6 x 1.2 mm
RoHS/RoHS II Compliant
MSL = N/A

Features

- Low VSWR
- High gain of 5.19 dBi
- Bandwidth of 100MHz
- Omnidirectional pattern
- Linear polarization

Applications

- WiFi
- Bluetooth
- ISM
- Wearables
- IoT
- AR/VR
- Drones

Electrical Specifications

Parameters	Min.	Typ.	Max.	Units
Center Frequency (No matching)		2875		MHz
Center Frequency (After matching)		2450		MHz
Bandwidth		100		MHz
VSWR		≤ 2.0		
Impedance		50		Ω
Gain		5.19		dBi
Azimuthal Beam width	Omni-directional			
Polarization	Linear			

Environmental Characteristics

Parameters	Description
Operating Temperature	-40°C to +105°C
Relative Humidity	55 ~ 75 %

2.45 GHz Ceramic Chip Antenna

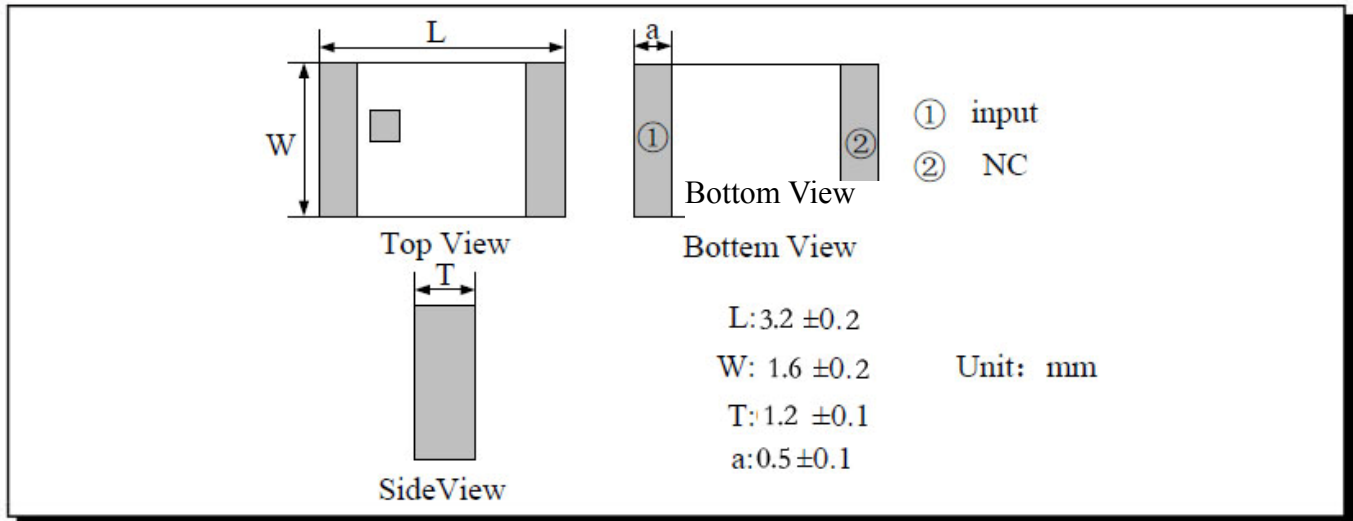


ACAG0301-2450-T

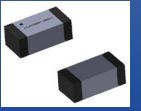


3.2 x 1.6 x 1.2 mm
RoHS/RoHS II Compliant
MSL = N/A

Product Dimensions (Unit: mm)



2.45 GHz Ceramic Chip Antenna

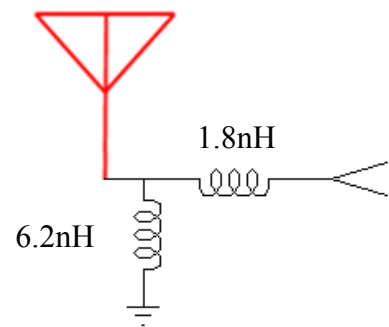
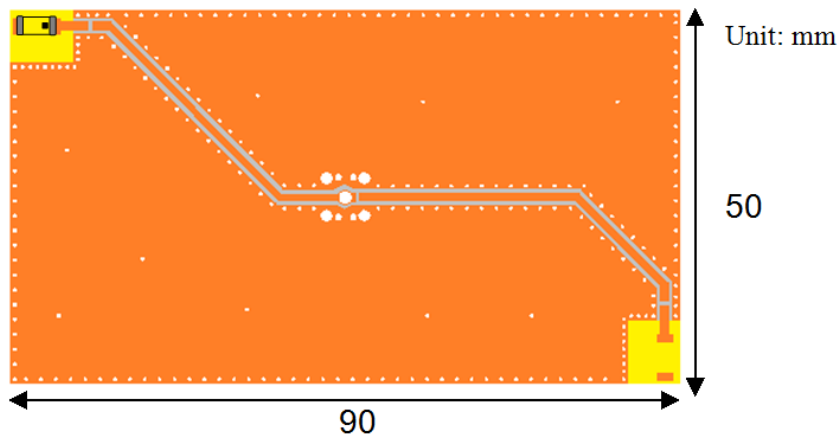
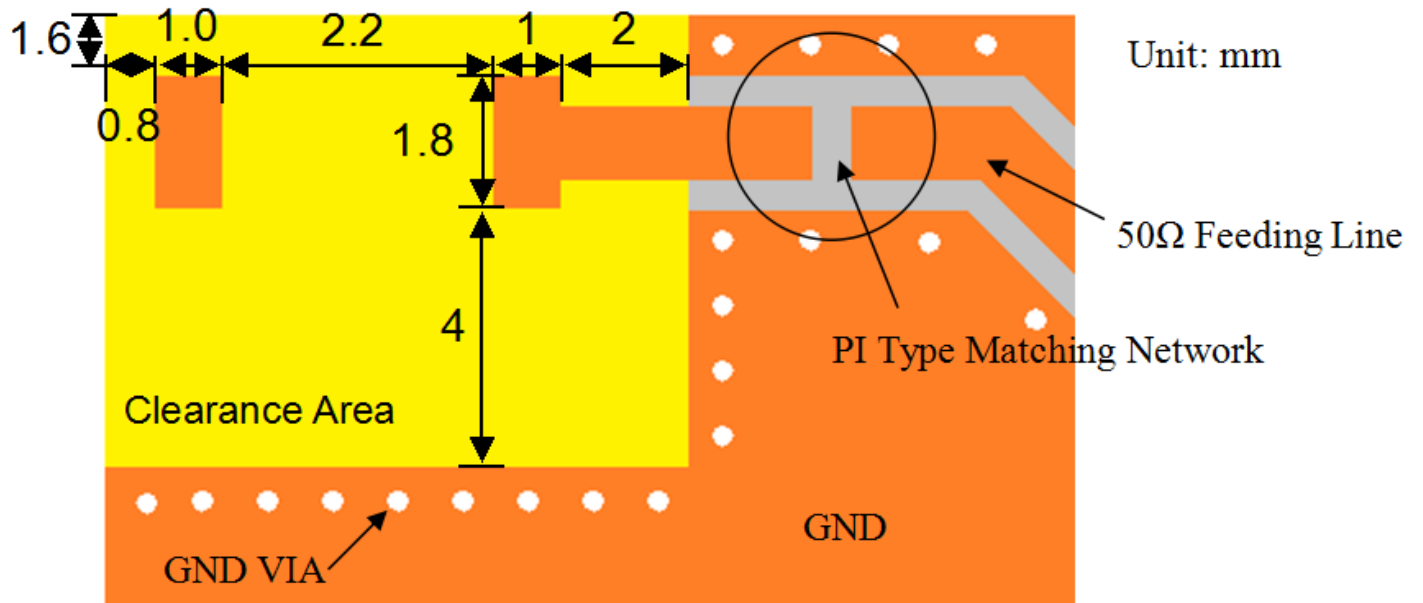


ACAG0301-2450-T

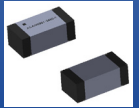


3.2 x 1.6 x 1.2 mm
RoHS/RoHS II Compliant
MSL = N/A

Evaluation Board and Matching Circuits



2.45 GHz Ceramic Chip Antenna

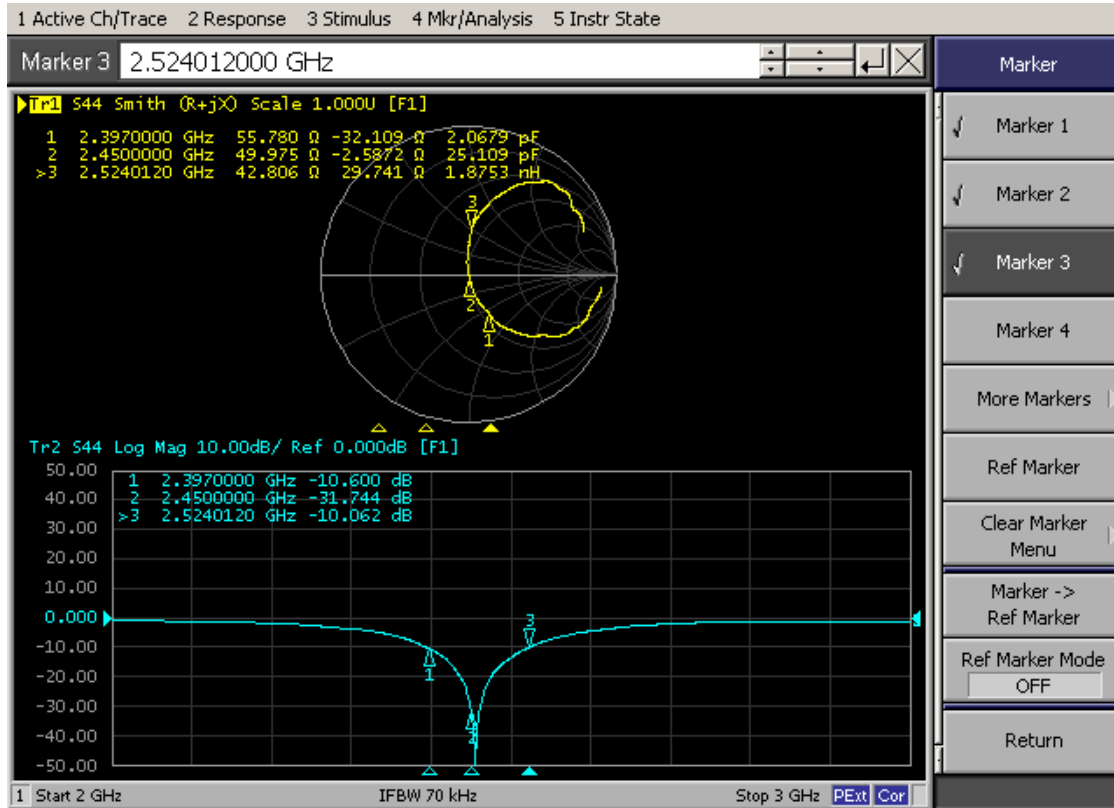


ACAG0301-2450-T



3.2 x 1.6 x 1.2 mm
RoHS/RoHS II Compliant
MSL = N/A

Return Loss and Impedance Characteristics



2.45 GHz Ceramic Chip Antenna

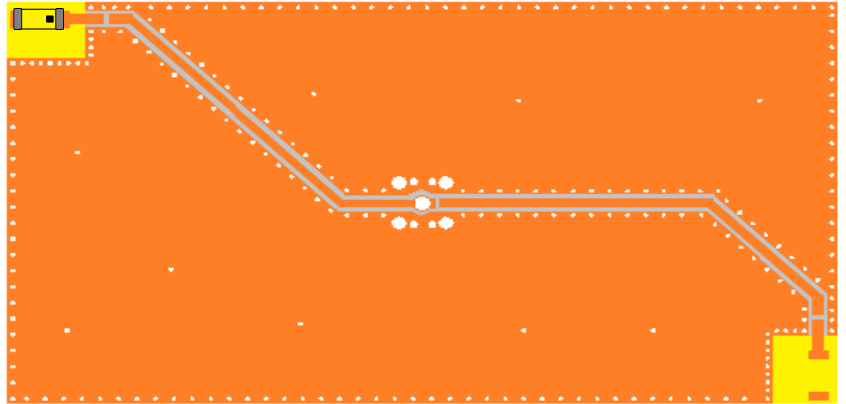
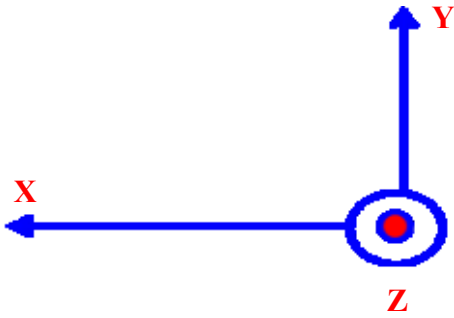


ACAG0301-2450-T



3.2 x 1.6 x 1.2 mm
RoHS/RoHS II Compliant
MSL = N/A

Radiation Pattern



2.45 GHz Ceramic Chip Antenna



ACAG0301-2450-T

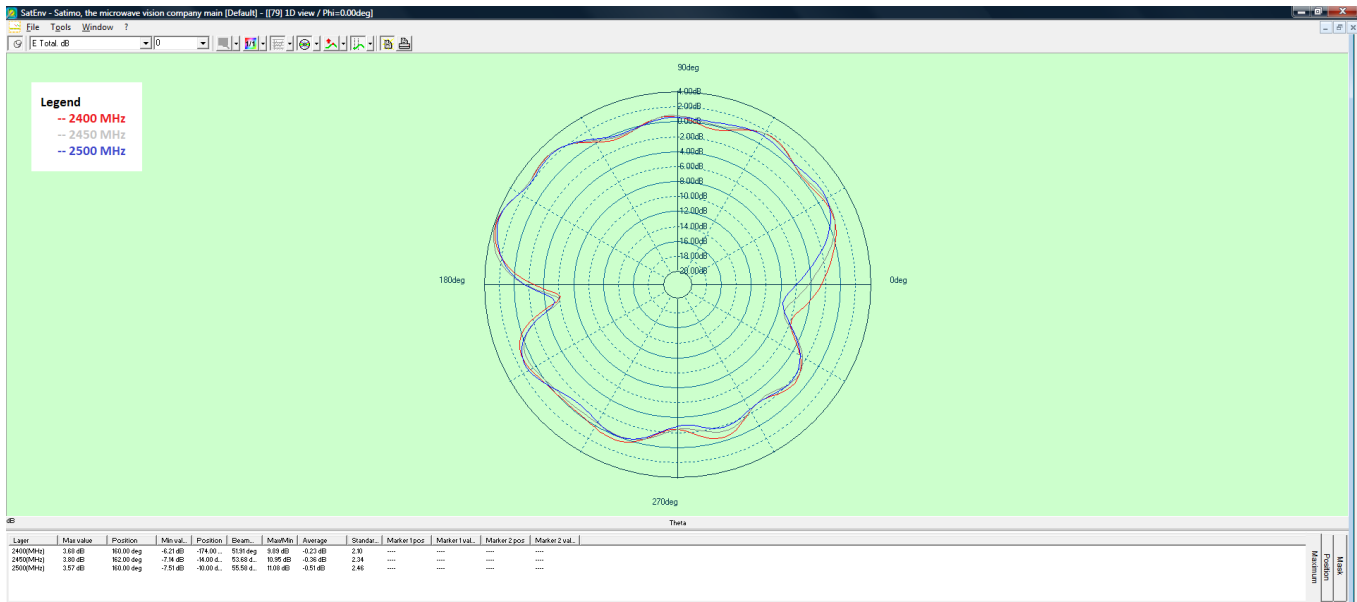


3.2 x 1.6 x 1.2 mm
RoHS/RoHS II Compliant
MSL = N/A

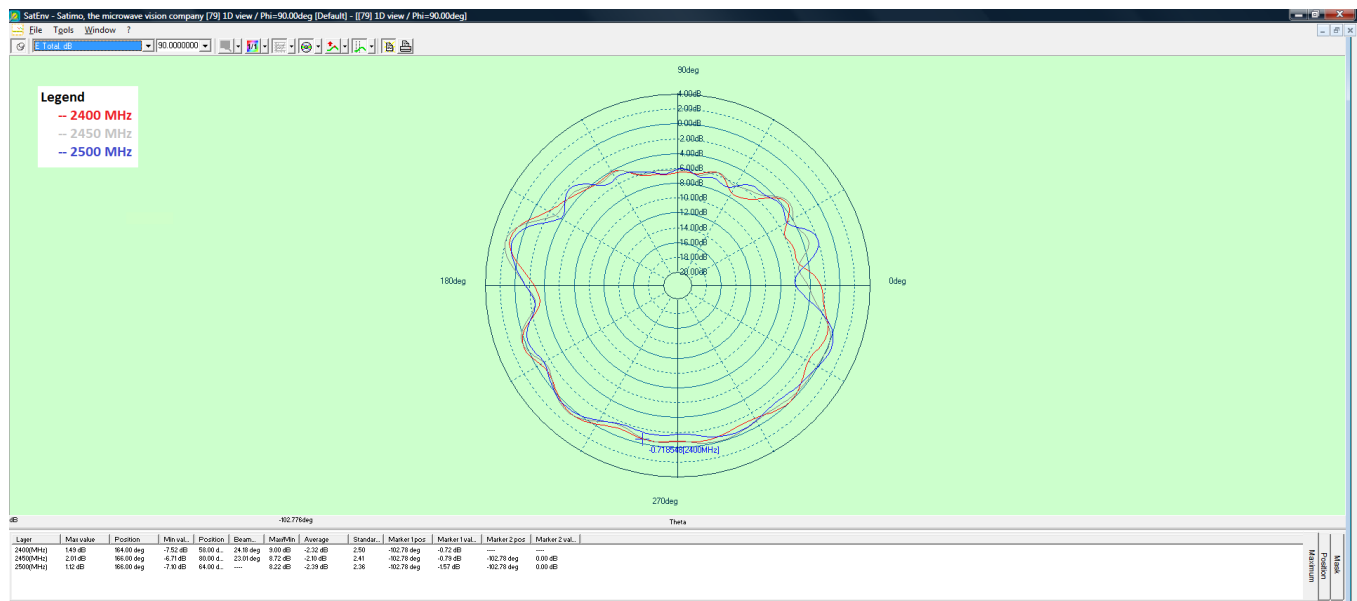
Radiation Pattern

2D – Pattern

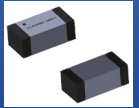
XZ- Plane



YZ- Plane



2.45 GHz Ceramic Chip Antenna



ACAG0301-2450-T

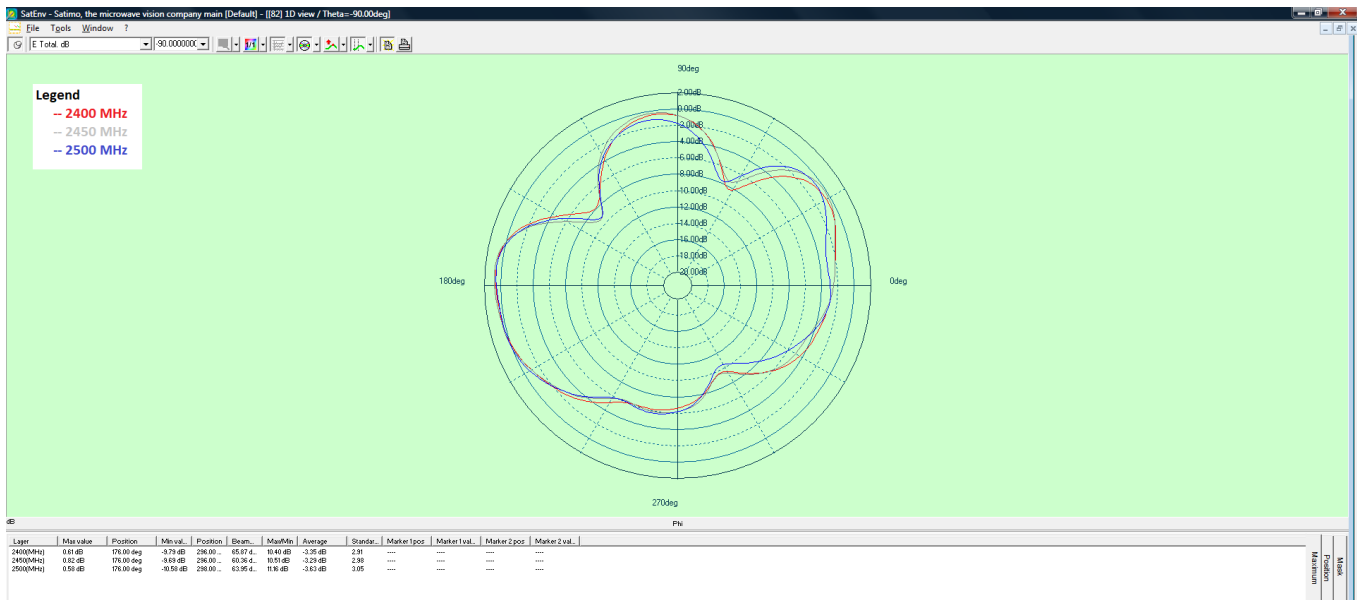


3.2 x 1.6 x 1.2 mm
RoHS/RoHS II Compliant
MSL = N/A

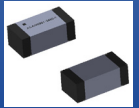
Radiation Pattern

2D – Pattern

XY- Plane



2.45 GHz Ceramic Chip Antenna



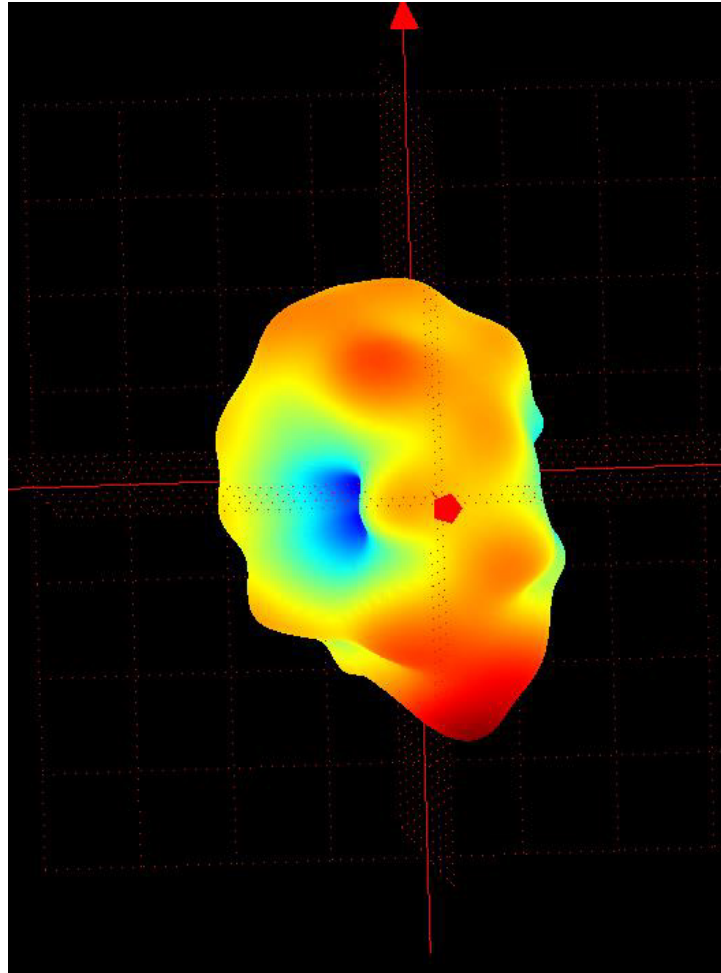
ACAG0301-2450-T



3.2 x 1.6 x 1.2 mm
RoHS/RoHS II Compliant
MSL = N/A

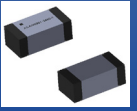
Radiation Patterns

3D – Pattern



Frequency (MHz)	Average Gain (dBi)	Peak Gain (dBi)	Efficiency (%)
2400	-0.23	4.98	70
2450	-0.36	5.19	71.2
2500	-0.51	4.55	69

2.45 GHz Ceramic Chip Antenna

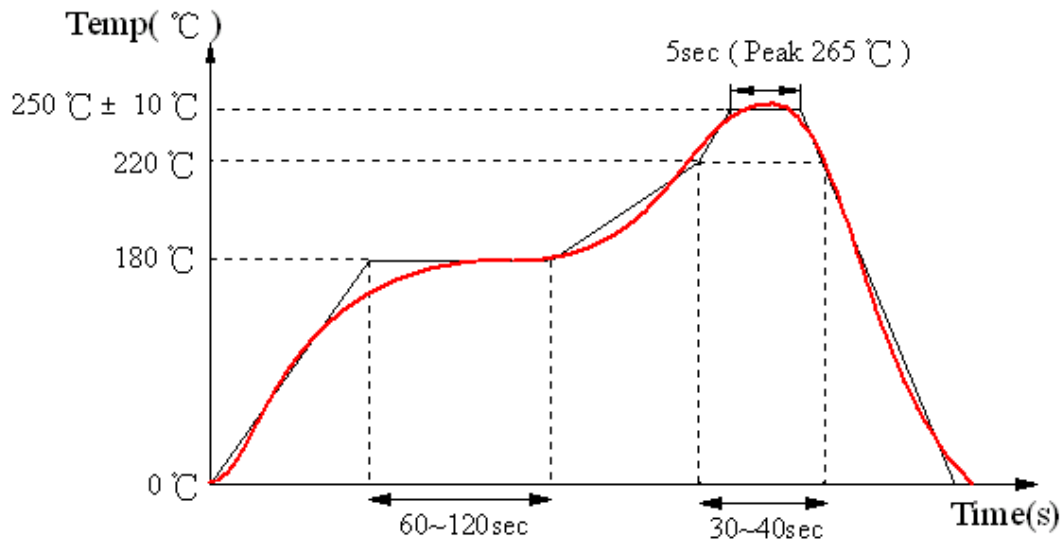


ACAG0301-2450-T

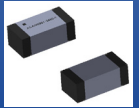


3.2 x 1.6 x 1.2 mm
RoHS/RoHS II Compliant
MSL = N/A

Reflow Soldering Standard Condition



2.45 GHz Ceramic Chip Antenna



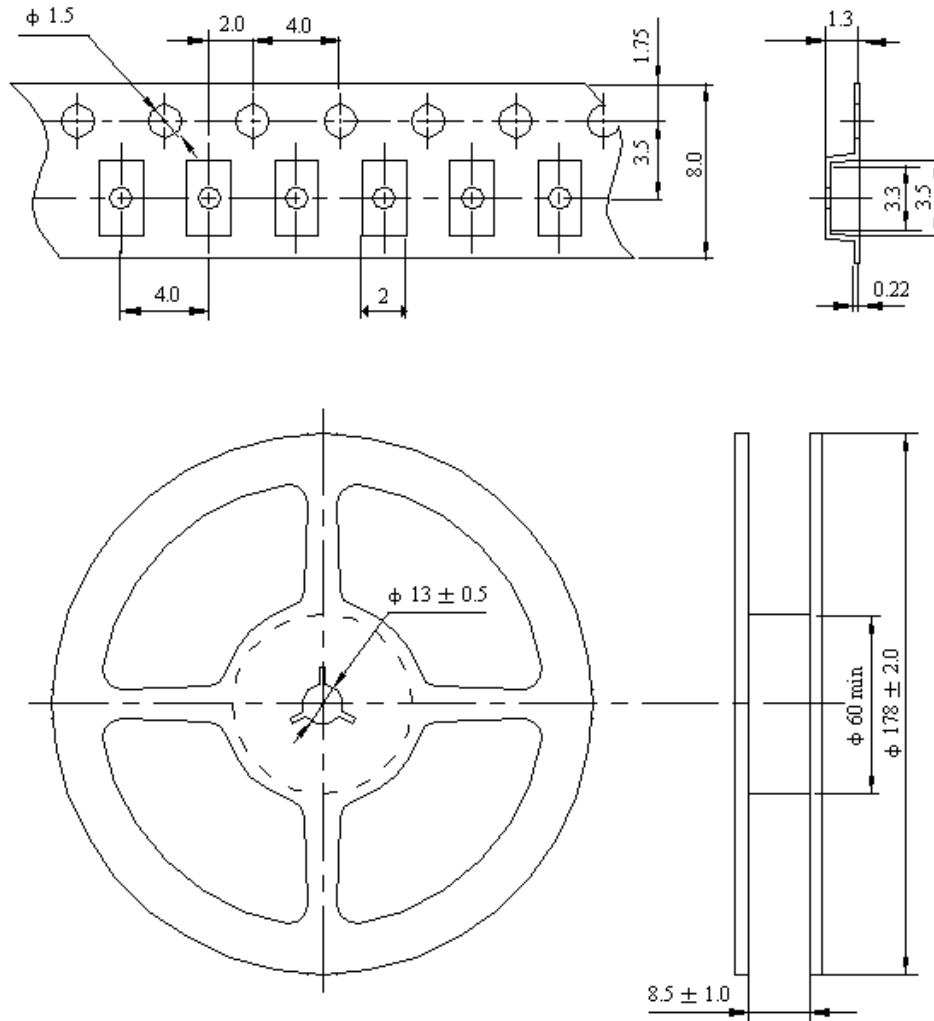
ACAG0301-2450-T



3.2 x 1.6 x 1.2 mm
RoHS/RoHS II Compliant
MSL = N/A

Packaging

There are 3000 pcs/Reel.



Unit : mm

ATTENTION: Abracon LLC's products are COTS – Commercial-Off-The-Shelf products; suitable for Commercial, Industrial and, where designated, Automotive Applications. Abracon's products are not specifically designed for Military, Aviation, Aerospace, Life-dependent Medical applications or any application requiring high reliability where component failure could result in loss of life and/or property. For applications requiring high reliability and/or presenting an extreme operating environment, written consent and authorization from Abracon LLC is required. Please contact Abracon LLC for more information.



5101 Hidden Creek Ln Spicewood TX 78669
Phone: 512-371-6159 | Fax: 512-351-8858
For terms and conditions of sales, please visit:
www.abracon.com

REVISED: 12.26.2019

ABRACON IS
ISO9001-2015
CERTIFIED