

303.825 MHz ONE-PORT SMD SAW RESONATOR

ASR303.825A01-SE



RoHS
Compliant



5.0 x 5.0 x 1.5mm

FEATURES:

- Low loss
- 5.0 x 5.0 x 1.5mm package
- 50Ω impedance termination

APPLICATIONS:

- Wireless remote controller
- Mobile communication

STANDARD SPECIFICATIONS:

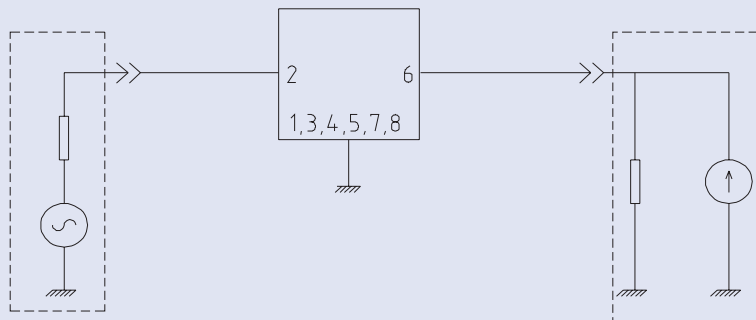
MAXIMUM RATINGS

Item	Value
Operation Temperature Range	-40C to +80C
Storage Temperature Range	-45C to +85C
DC Voltage	10V
Source Power	0 dBm

ELECTRICAL CHARACTERISTICS

Item		Minimum	Typical	Maximum	Unit
Center Frequency (f_c)		303.750	303.825	303.900	MHz
Insertion Loss		--	1.3	2.5	dB
Quality Factor:	Unloaded Q	--	12000	--	--
	50Ω Loaded Q	--	2000	--	--
Frequency Aging		--	<±10	--	ppm/yr
DC Insulation Resistance		1.0	--	--	MΩ
Temperature Stability	Turnover Temperature	--	39	--	°C
	Freq. Temp. Coefficient	--	0.032	--	ppm/°C
RF equivalent RLC Model	Motional Resistance R1	--	12	19	Ω
	Motional Inductance L1	--	94	--	μH
	Motional Capacitance C1	--	29	--	fF
	Shunt Static Capacitance C0	2.7	3.0	3.3	pF

TEST CIRCUIT



303.825 MHz ONE-PORT SMD SAW RESONATOR

ASR303.825A01-SE

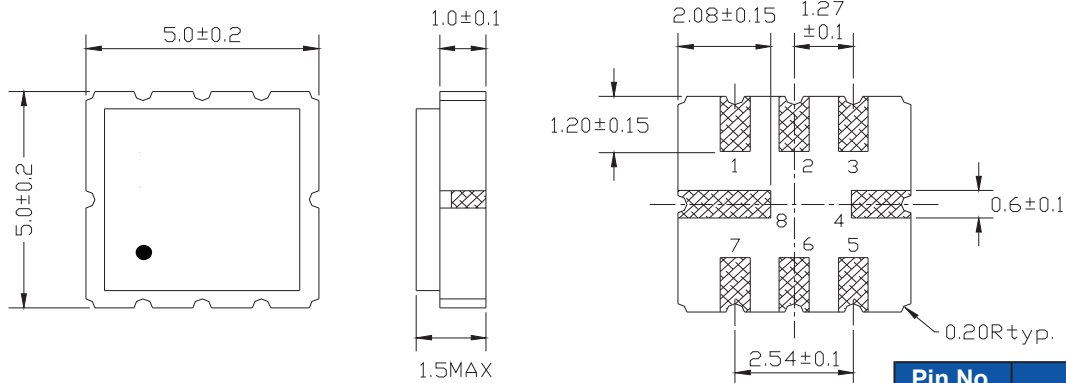


RoHS
Compliant



5.0 x 5.0 x 1.5mm

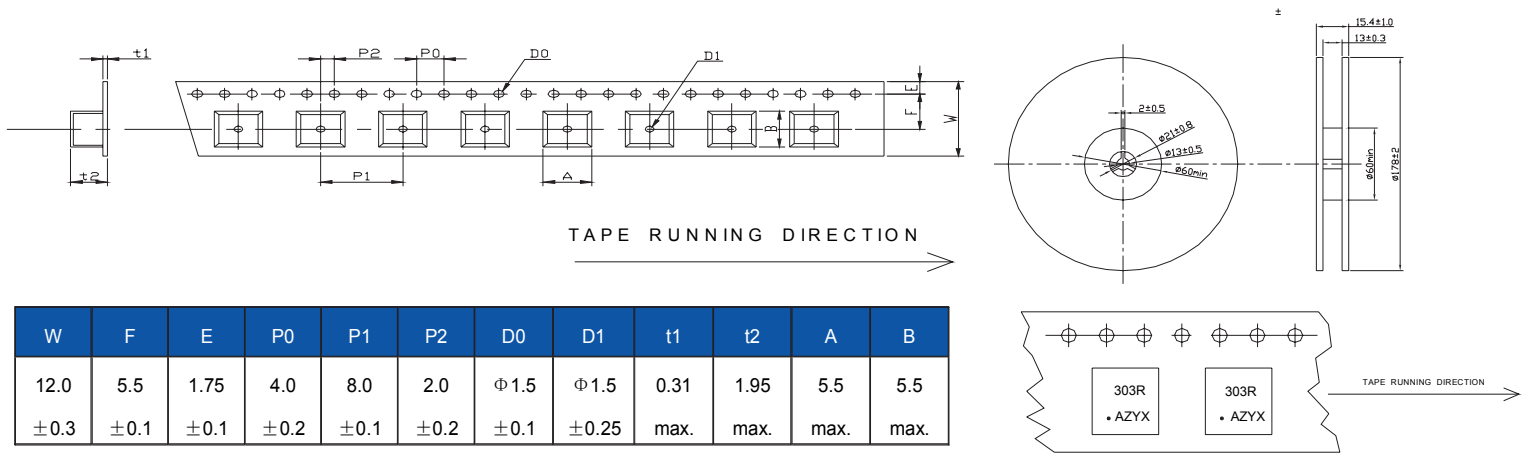
OUTLINE DIMENSIONS:



Dimension : mm

Pin No.	Function
Pin 2	Input
Pin 6	Output
Others	Ground

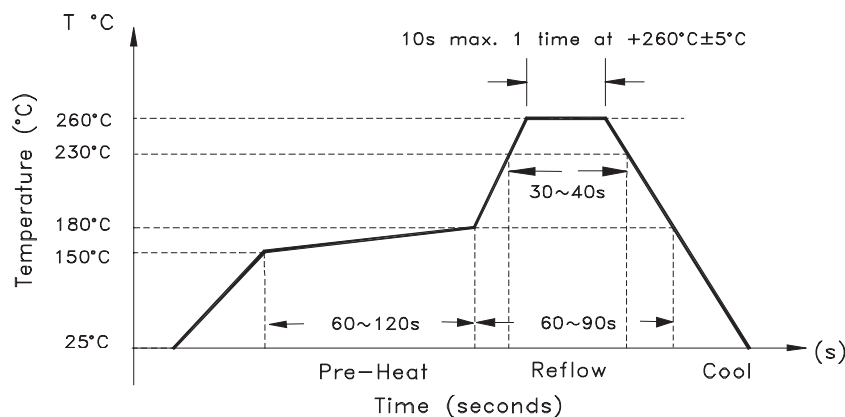
TAPE AND REEL:



W	F	E	P0	P1	P2	D0	D1	t1	t2	A	B
12.0	5.5	1.75	4.0	8.0	2.0	Φ1.5	Φ1.5	0.31	1.95	5.5	5.5
±0.3	±0.1	±0.1	±0.2	±0.1	±0.2	±0.1	±0.25	max.	max.	max.	max.

Dimension : mm

REFLOW PROFILE:



NOTE: Abracon manufactured products are intended for general commercial and industrial use. For applications requiring high reliability and/or presenting extreme operating environment, written consent & authorization from Abracon is required.

ABRACON IS
ISO9001:2008
CERTIFIED



Visit www.abracon.com for Terms & Conditions of Sale **Revised: 04.20.10**
 30332 Esperanza, Rancho Santa Margarita, California 92688
 tel 949-546-8000 | fax 949-546-8001 | www.abracon.com