

RJ45 10/100 Base-T Jack with Magnetic Module



16.26 x 13.84 x 21.59mm

ARJ11D

RoHS
Compliant

FEATURES:

- Available with or without LED
- Suitable CAT 5 & 6 cable and UTP
- Comply IEEE 802.3ab
- LAN Magnetic with RJ4
- Suitable for RoHS compliant reflow

APPLICATIONS:

- 10/100 Base-T LAN
- NIC, LoM and PC

STANDARD SPECIFICATIONS at 25°C

Operating temperature range: 0°C to +70°C Storage temperature range: -40°C to +85°C

Part Number	Turns Ratio		EMI Fingers	LEDs L/R	Insertion Loss (dB TYP) 1-65 MHz	Return Loss (dB TYP @ 100Ω±15Ω)			
	TX	RX				1- 10 MHz	10-30 MHz	30-60 MHz	60 – 80 MHz
ARJ11D-MCSA-LU2	1CT:1	1CT:1CT	Yes	NONE	-1	-20	-16	-12	-10
ARJ11D-MASB-B-A-□MU2	1CT:1CT	1CT:1CT	Yes	Y/G	-1	-20	-16	-12	-10
ARJ11D-MCSC-LU2	1CT:1	1CT:1CT	Yes	NONE	-1	-20	-16	-12	-10
ARJ11D-MDSD-A-B-□LT2	1CT:1	1CT:1	No	G/Y	-1	-20	-16	-12	-10
ARJ11D-MCSD-LT2	1CT:1	1CT:1	Yes	NONE	-1	-20	-16	-12	-10
ARJ11D-MDSE-A-B-□MU2	1CT:1CT	1CT:1CT	No	G/Y	-1	-20	-16	-12	-10
ARJ11D-MASE-A-B-□MU2	1CT:1CT	1CT:1CT	Yes	G/Y	-1	-20	-16	-12	-10
ARJ11D-MDSG-B-A-□MU2	1CT:1CT	1CT:1CT	No	Y/G	-1	-20	-16	-12	-10
ARJ11D-MASG-B-A-□MU2	1CT:1CT	1CT:1CT	Yes	Y/G	-1	-20	-16	-12	-10
ARJ11D-MASG-A-A-□MU2	1CT:1CT	1CT:1CT	Yes	G/G	-1	-20	-16	-12	-10
ARJ11D-MESH-LU2	1CT:1	1CT:1CT	Yes	NONE	-1	-20	-16	-12	-10
ARJ11D-MDSH-A-B-□LU2	1CT:1	1CT:1CT	No	G/Y	-1	-20	-16	-12	-10
ARJ11D-MASH-B-A-□LU2	1CT:1	1CT:1CT	Yes	Y/G	-1	-20	-16	-12	-10
ARJ11D-MBSJ-A-DA-HLT2	1CT:1	1CT:1	Yes	G/O_G	-1	-20	-16	-12	-10
ARJ11D-MBSK-A-DA-HMU2	1CT:1CT	1CT:1CT	Yes	G/O_G	-1	-20	-16	-12	-10
ARJ11D-MBSL-A-DA-HLU2	1CT:1	1CT:1CT	Yes	G/O_G	-1	-20	-16	-12	-10

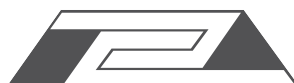
Part Number	Crosstalk (dB TYP)			Common Mode Rejection (dB TYP)		Hipot (Vrms) @60Hz
	1-30 MHz	30-60 MHz	60-100 MHz	1-50 MHz	50-150 MHz	
ARJ11D-MCSA-LU2	-40	-35	-30	-30	-20	1500
ARJ11D-MASB-B-A-□MU2	-40	-35	-30	-30	-20	1500
ARJ11D-MCSC-LU2	-40	-35	-30	-30	-20	1500
ARJ11D-MDSD-A-B-□LT2	-40	-35	-30	-30	-20	1500
ARJ11D-MCSD-LT2	-40	-35	-30	-30	-20	1500
ARJ11D-MDSE-A-B-□MU2	-40	-35	-30	-30	-20	1500
ARJ11D-MASE-A-B-□MU2	-40	-35	-30	-30	-20	1500
ARJ11D-MDSG-B-A-□MU2	-40	-35	-30	-30	-20	1500
ARJ11D-MASG-B-A-□MU2	-40	-35	-30	-30	-20	1500
ARJ11D-MASG-A-A-□MU2	-40	-35	-30	-30	-20	1500
ARJ11D-MESH-LU2	-40	-35	-30	-30	-20	1500
ARJ11D-MDSH-A-B-□LU2	-40	-35	-30	-30	-20	1500
ARJ11D-MASH-B-A-□LU2	-40	-35	-30	-30	-20	1500
ARJ11D-MBSJ-A-DA-HLT2	-40	-35	-30	-30	-20	1500
ARJ11D-MBSK-A-DA-HMU2	-40	-35	-30	-30	-20	1500
ARJ11D-MBSL-A-DA-HLU2	-40	-35	-30	-30	-20	1500

□: LED Polarity Option

ARJ11D-MA: E, F or G
ARJ11D-MD: E, F or G

Contact Abracon for more custom configurations. See options to build a custom configuration.

ABRACON IS
ISO 9001:2008
CERTIFIED



ABRACON
CORPORATION

Visit www.abracon.com for Terms & Conditions of Sale
30332 Esperanza, Rancho Santa Margarita, California 92688
tel 949-546-8000 | fax 949-546-8001 | www.abracon.com

Revised: 05.03.11

RJ45 10/100 Base-T Jack with Magnetic Module



16.26 x 13.84 x 21.59mm

ARJ11D

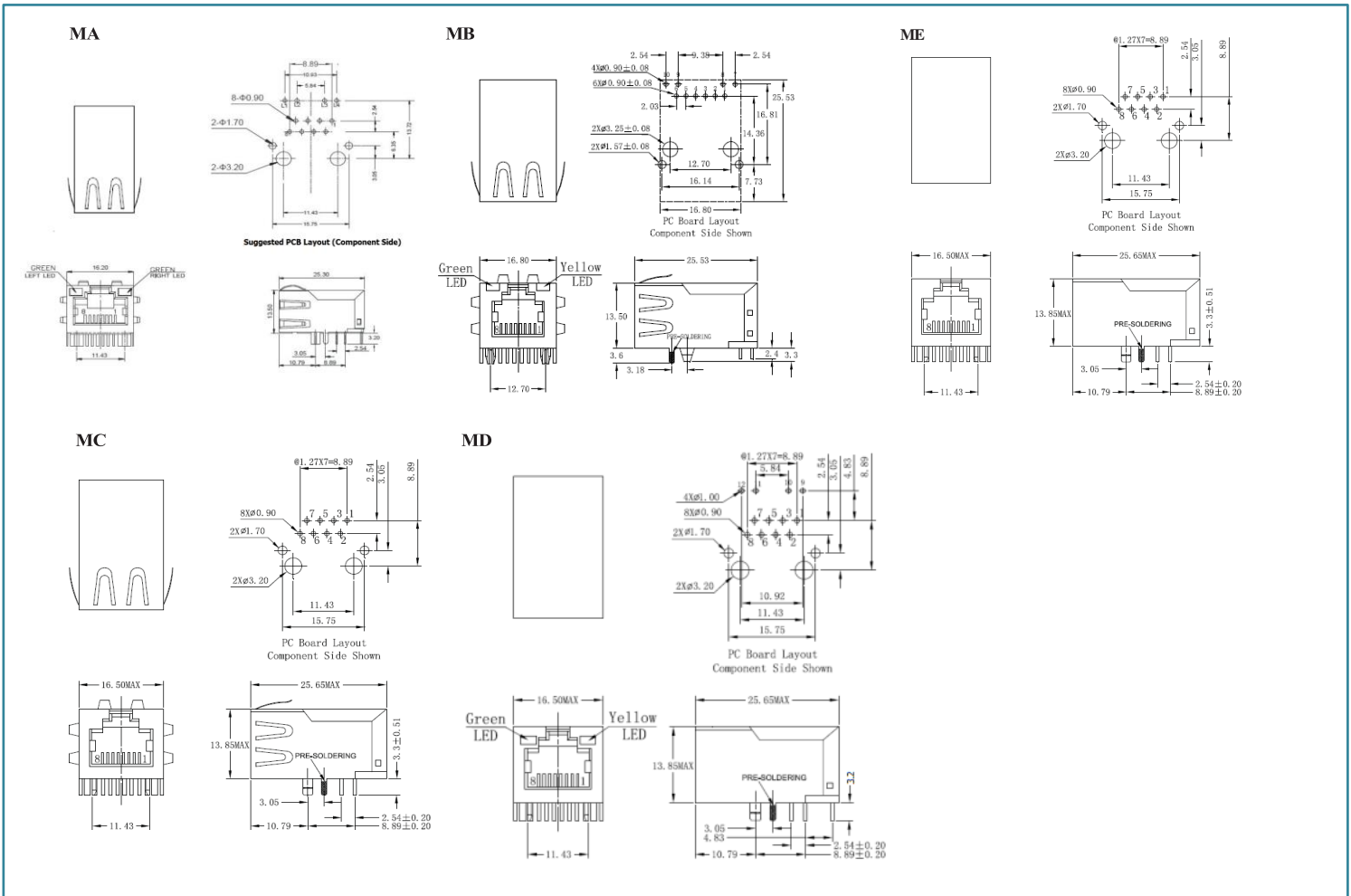
RoHS
Compliant

OPTIONS AND PART IDENTIFICATION

ARJ11D - - - - - - -

Mechanical	Schematic	Left LED color (e.g. B for Yellow, AB for Green-Yellow)	Right LED color (e.g. B for Yellow, AB for Green Yellow)	LED polarity	Turns Ratio (Tx)	Turns Ratio (Rx)	Gold plating
MA, MB (Please see mechanical section)	SA ~ SR (Please see schematic section)	Blank: No LED A: Green B: Yellow C: Amber D: Orange	Blank: No LED A: Green B: Yellow C: Amber D: Orange	Blank: No LED E ~ I (Please see 7.0 LED polarity section)	K: 1CT:1.41 L: 1CT:1 M: 1CT:1CT N: 1.414:1CT O: 1CT:1.41CT P: 1:2CT Q: 1:1.414CT R: 1CT:2.5	S: 1CT:1.41 T: 1CT:1 U: 1CT:1CT V: 1.414:1CT W: 1CT:1.41CT X: 1:2CT Y: 1:1.414CT Z: 1CT:2.5	1: 3u “ 2: 6u “ 3: 15u “ 4: 30u “ 5: 50u “

MECHANICAL DIMENSIONS



ABRACON IS
ISO 9001:2008
CERTIFIED



ABRACON
CORPORATION

Visit www.abracon.com for Terms & Conditions of Sale
30332 Esperanza, Rancho Santa Margarita, California 92688
tel 949-546-8000 | fax 949-546-8001 | www.abracon.com

Revised: 03.20.24

RJ45 10/100 Base-T Jack with Magnetic Module

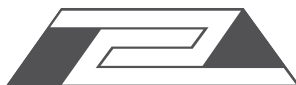
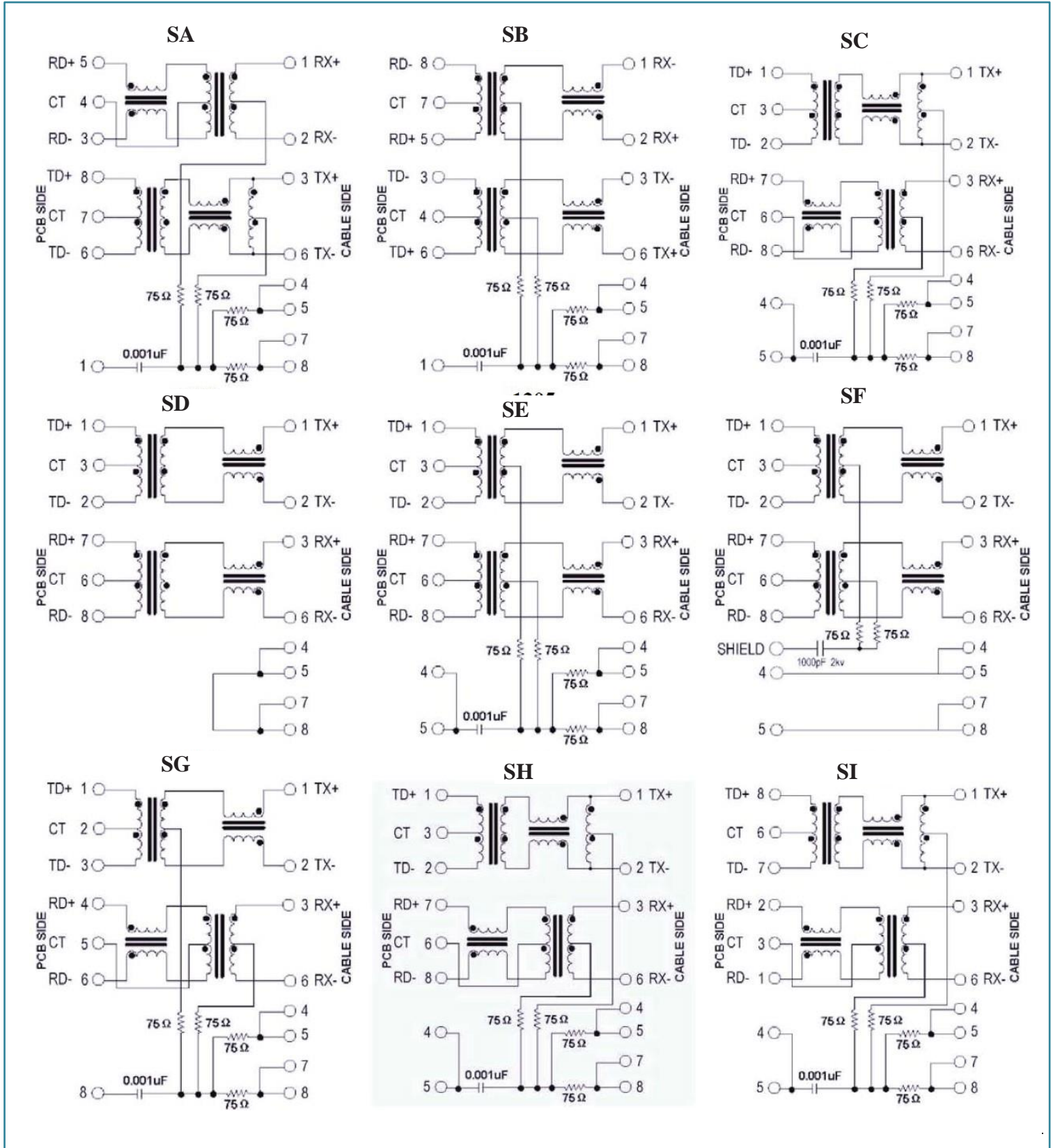


16.26 x 13.84 x 21.59mm

ARJ11D

RoHS
Compliant

SCHEMATICS



RJ45 10/100 Base-T Jack with Magnetic Module

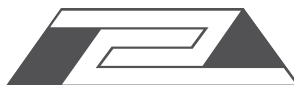
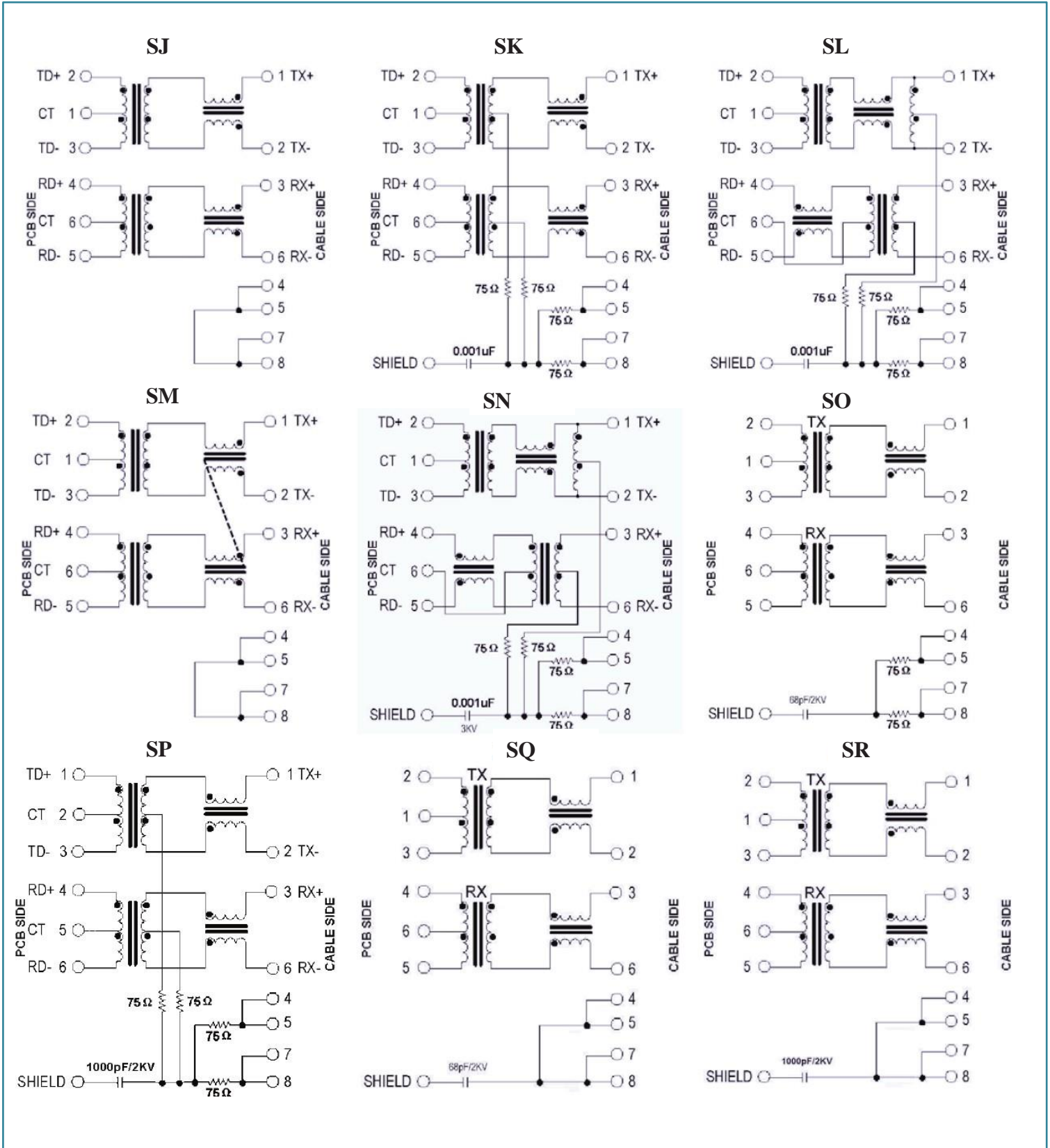


16.26 x 13.84 x 21.59mm

ARJ11D

RoHS
Compliant

SCHEMATICS - continued



RJ45 10/100 Base-T Jack with Magnetic Module

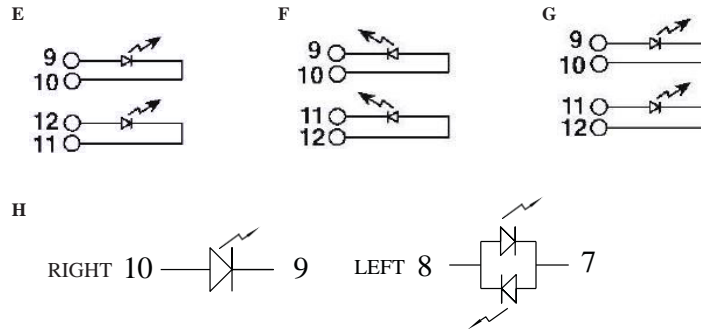


16.26 x 13.84 x 21.59mm

ARJ11D

RoHS
Compliant

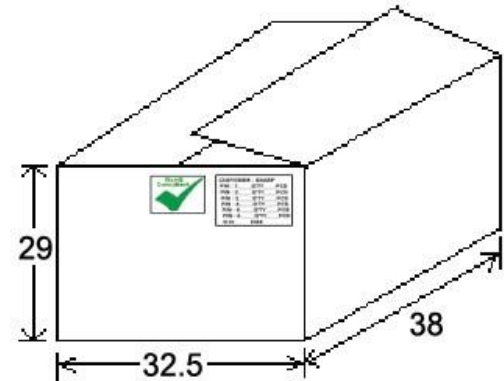
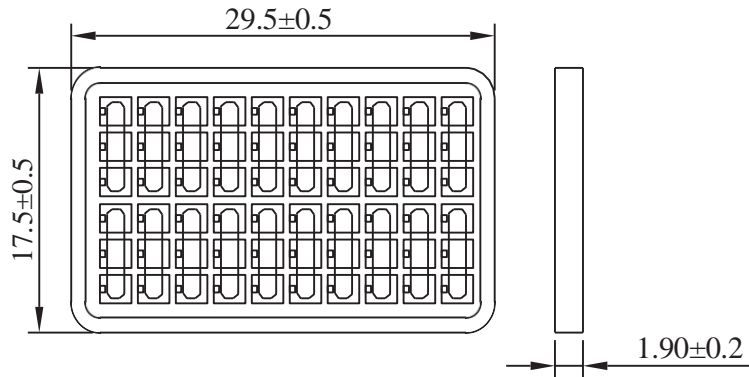
LED POLARITY



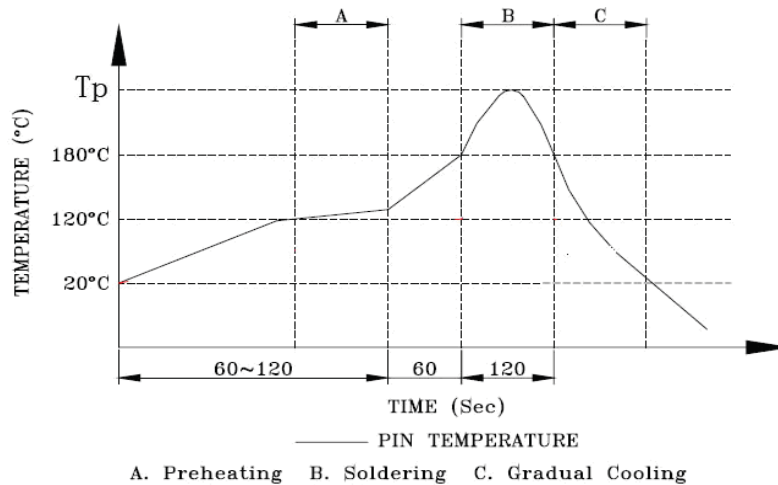
PACKING: 60pcs/tray

Packing 60pcs/tray
Packaging material: PET

Outer carton unit 1320 pcs/ 22 Trays/box



REFLOW PROFILE:



ATTENTION: Abracon Corporation's products are COTS – Commercial-Off-The-Shelf products; suitable for Commercial, Industrial and, where designated, Automotive Applications. Abracon's products are not specifically designed for Military, Aviation, Aerospace, Life-dependant Medical applications or any application requiring high reliability where component failure could result in loss of life and/or property. For applications requiring high reliability and/or presenting an extreme operating environment, written consent and authorization from Abracon Corporation is required. Please contact Abracon Corporation for more information.

ABRACON IS
ISO 9001:2008
CERTIFIED



Visit www.abracon.com for Terms & Conditions of Sale
30332 Esperanza, Rancho Santa Margarita, California 92688
tel 949-546-8000 | fax 949-546-8001 | www.abracon.com

Revised: 03.20.24