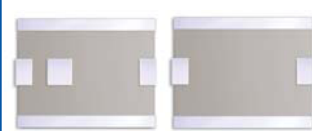


# 2.0 x 1.25mm MULTILAYER 2450MHz LOW-PASS FILTER

ALFC21-2450



**RoHS**  
Compliant



2.0 x 1.25 x 0.9 mm

## FEATURES:

- Multilayer monolithic structure yields high reliability
- Low insertion loss and high attenuation PDA
- Small size SMD chip design for complex tuning and circuit design

## APPLICATIONS:

- WLAN, DSTV
- PDA
- Cordless phones

## STANDARD SPECIFICATIONS:

### PARAMETERS

ABRACON P/N	ALFC21-2450
Operating temperature:	-40°C~+85°
Storage temperature:	-40°C~+85°

No.	Item	Specifications
5.1	Center Frequency Fo	2450 MHz
5.2	Insertion Loss	≤ 0.8dB (at 25°C±5°C)
		≤ 1.2dB (at -40°C~85°C)
5.3	Band Width	2400~2500 MHz
5.4	Ripple (in BW)	≤ 0.5 dB
5.5	V.S.W.R (in BW)	≤ 1.8
5.6	Attenuation	≥ 27dB ( at 4900 MHz)
		≥ 27dB ( at 7350 MHz)
		≥ 27dB ( at 9800 MHz)
5.7	Permissible Input Power	1 W
5.8	In/Output Impedance	50 Ω

## OPTIONS AND PART IDENTIFICATION

[Left blank if standard]

**ALFC21 - 2450** - □

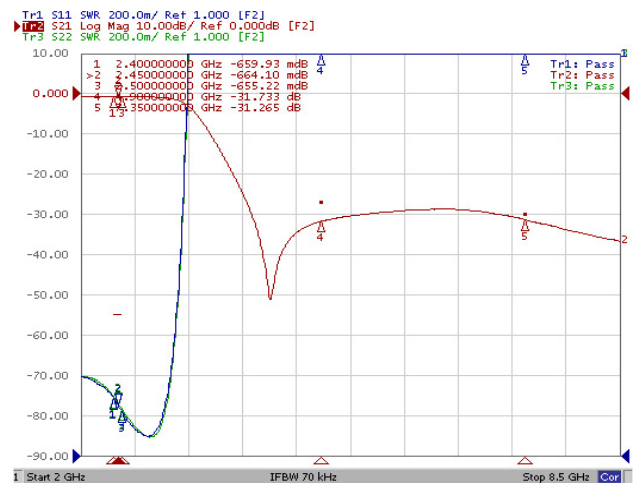
### Center Frequency

Please refer to the tables above.

### Packaging

T	Tape and Reel
---	---------------

## CHARACTERISTIC CURVE:

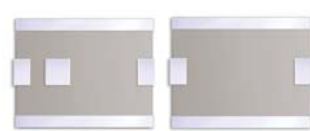


# 2.0 x 1.25mm MULTILAYER 2450MHz LOW-PASS FILTER

ALFC21-2450

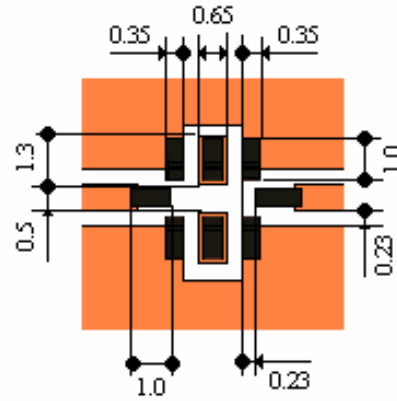
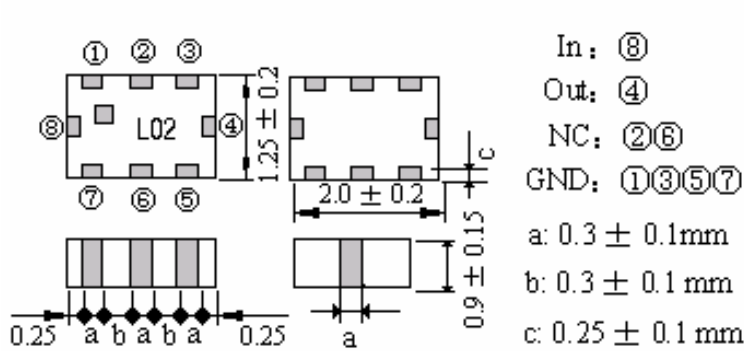


RoHS  
Compliant



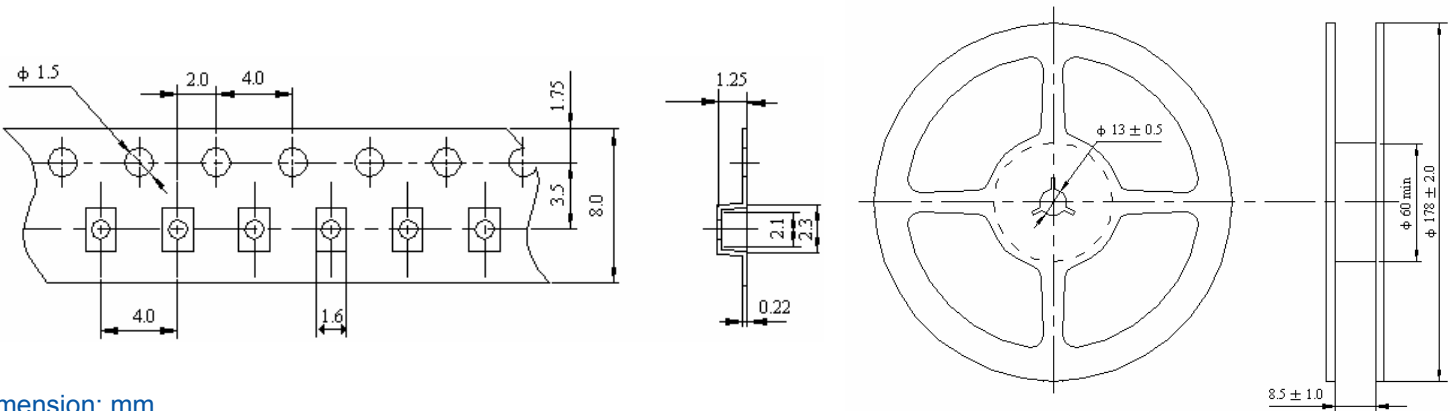
2.0 x 1.25 x 0.9 mm

## OUTLINE DRAWING:



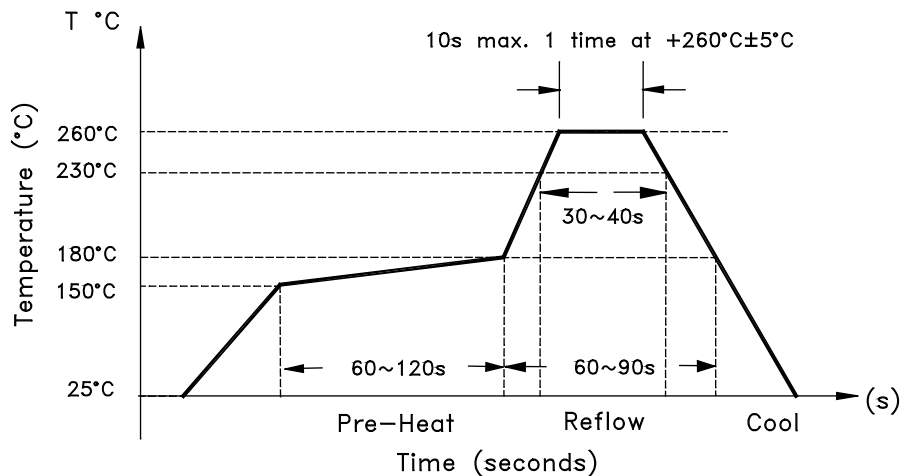
Dimension: mm

## TAPE & REEL:



Dimension: mm

## REFLOW PROFILE:



**NOTE:** Abracon manufactured products are intended for general commercial and industrial use. For applications requiring high reliability and/or presenting extreme operating environment, written consent & authorization from Abracon is required.

ABRACON IS  
ISO 9001 / QS 9000  
CERTIFIED



Visit [www.abracon.com](http://www.abracon.com) for Terms & Conditions of Sale **Revised: 08.21.09**  
 30332 Esperanza, Rancho Santa Margarita, California 92688  
 tel 949-546-8000 | fax 949-546-8001 | [www.abracon.com](http://www.abracon.com)