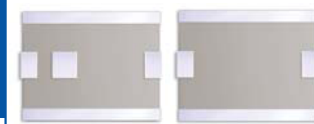


# SMD 2.45GHz Dielectric Band Pass Filter

ADFC21-2450.00-G-T



RoHS  
Compliant



2.0 x 1.25 x 0.95 mm

## FEATURES:

- Low Insertion Loss 1.5dB max
- Excellent attenuation
- 2.0 x 1.25 x 0.95mm SMD

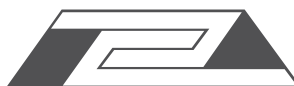
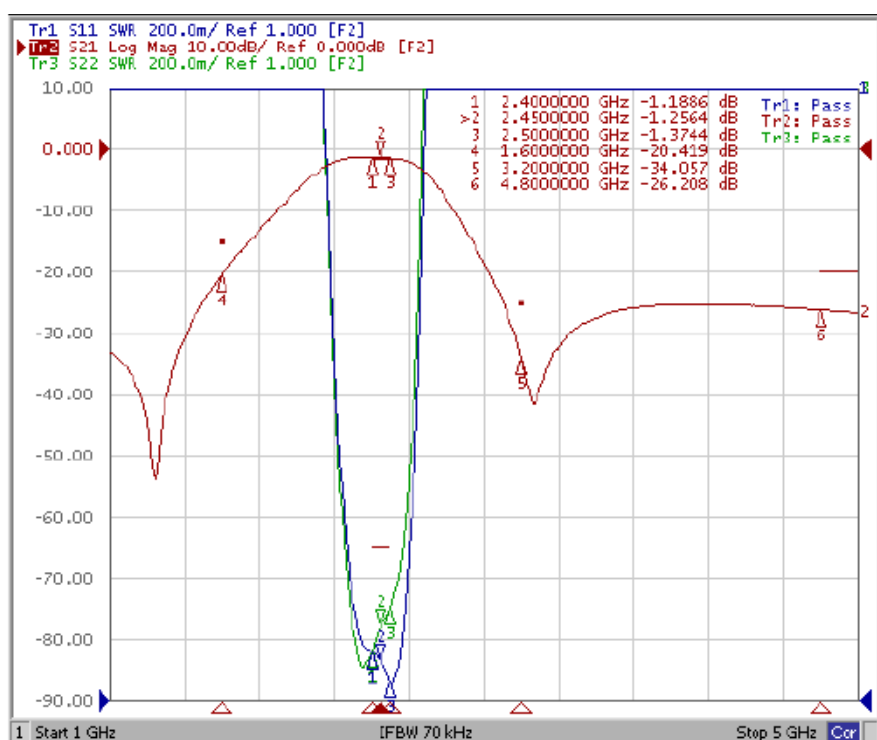
## APPLICATIONS:

- WLAN
- DSTV
- Cordless phone

## STANDARD SPECIFICATIONS:

Parameters	Minimum	Typical	Maximum		Notes
Center Frequency ( $f_0$ )		2,450.00		MHz	
Passband width	2,400.00	-----	2,500.00	MHz	
Insertion Loss (2,400 ~ 2,500MHz)	-----	-----	1.5	dB	at +25 ±5°C
	-----	-----	1.8	dB	-40 ~ +85°C
Amplitude Ripple	-----	-----	1.0	dB	
V.S.W.R	-----	-----	2.0		2,400 ~ 2,500MHz
Relative Attenuation (Reference level: 0dB)	15	-----	-----	dB	at 1,600 MHz
	25	-----	-----		at 3,200 MHz
	25	-----	-----		4,800 ~ 5,000 MHz
Terminating Source Impedance ( $Z_s$ )	-----	50	-----	$\Omega$	
Terminating Load Impedance ( $Z_L$ )	-----	50	-----	$\Omega$	
Operation Temperature Range	-40	-----	+85	°C	
Storage Temperature Range	-40	-----	+85	°C	
Permissible Input Power	-----	-----	1.0	W	

## CHARACTERISTIC CURVE:

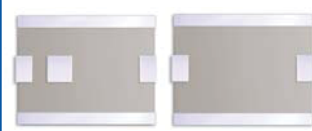


# SMD 2.45GHz Dielectric Band Pass Filter

ADFC21-2450.00-G-T

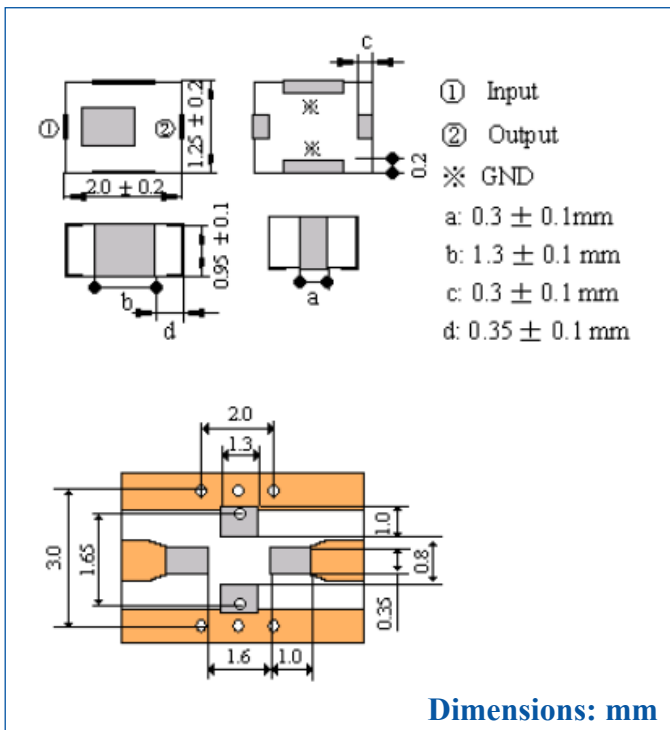


RoHS  
Compliant

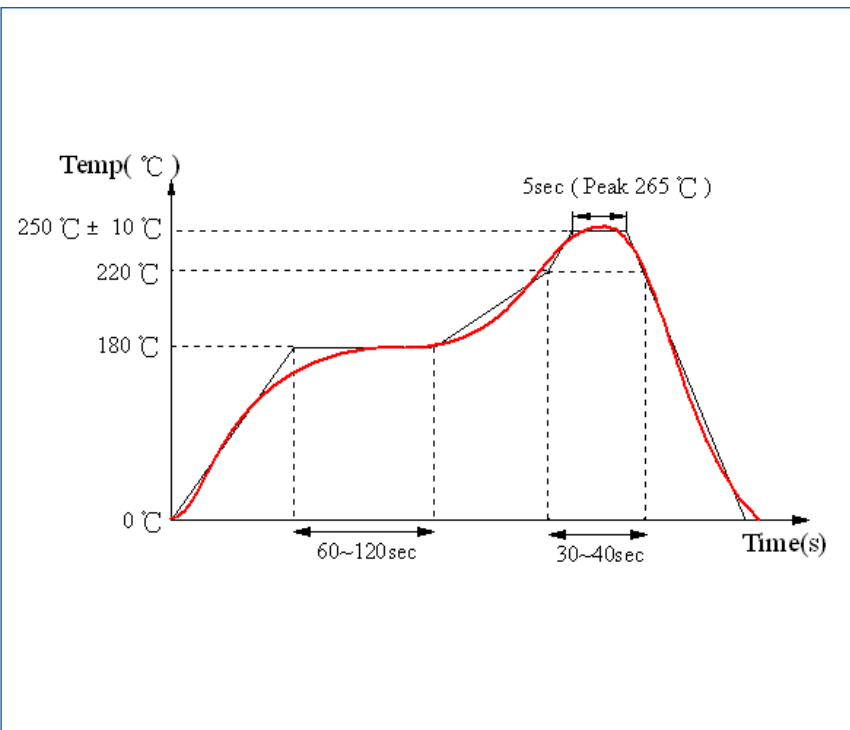


2.0 x 1.25 x 0.95 mm

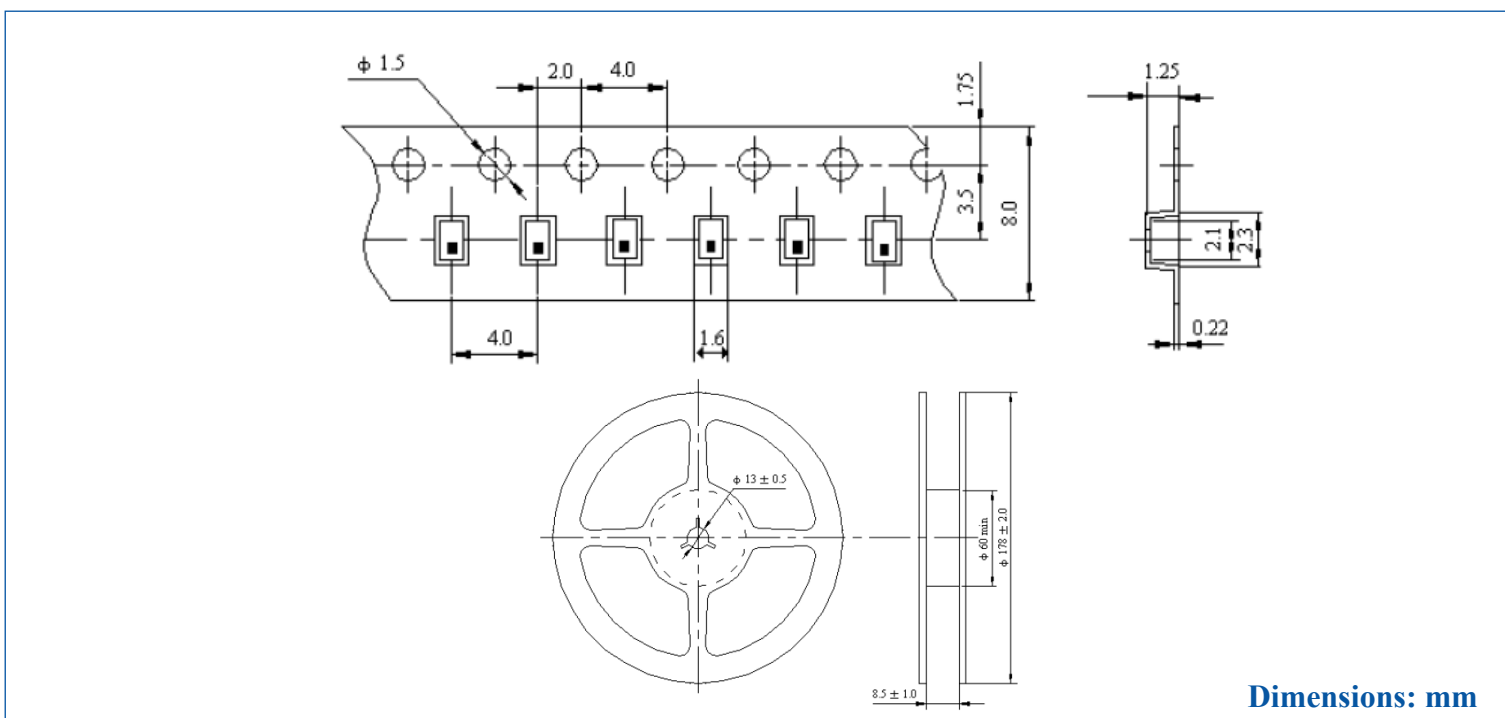
## OUTLINE DRAWING:



## REFLOW PROFILE:



## TAPE & REEL: 4,000pcs/reel



**ATTENTION:** Abracon Corporation's products are COTS – Commercial-Off-The-Shelf products; suitable for Commercial, Industrial and, where designated, Automotive Applications. Abracon's products are not specifically designed for Military, Aviation, Aerospace, Life-dependant Medical applications or any application requiring high reliability where component failure could result in loss of life and/or property. For applications requiring high reliability and/or presenting an extreme operating environment, written consent and authorization from Abracon Corporation is required. Please contact Abracon Corporation for more information.

ABRACON IS  
ISO 9001:2008  
CERTIFIED



**ABRACON**  
CORPORATION

Visit [www.abracon.com](http://www.abracon.com) for Terms & Conditions of Sale  
30332 Esperanza, Rancho Santa Margarita, California 92688  
tel 949-546-8000 | fax 949-546-8001 | [www.abracon.com](http://www.abracon.com)

Revised: 06.04.11